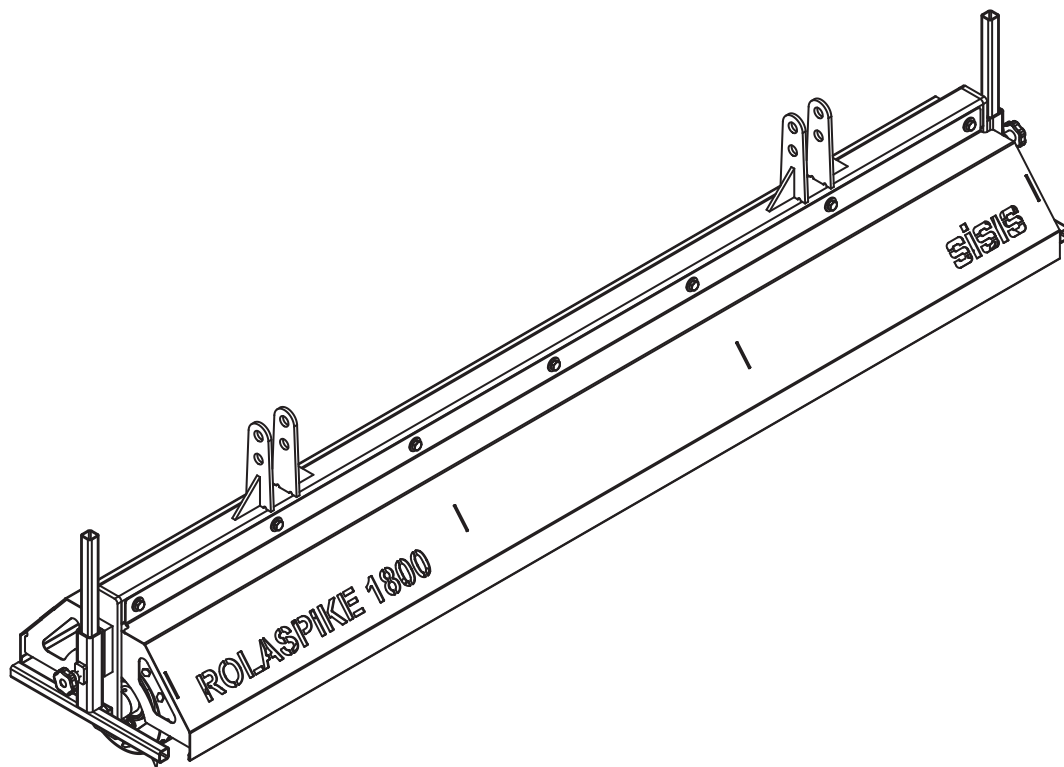


sisis®

ROLASPIKE INSTRUCTION MANUAL



SISIS, Ashbourne Road, Kirk Langley, Derbyshire, DE6 4NJ, England.

Tel: +44 (0) 1332 824 777 | Fax: +44 (0) 1332 824 525 | Email: info@sisis.com | www.sisis.com

A division of Howardson Ltd. - a proudly British company
Company reg no 641526 - Vat No GB 345 9918 12

SP20013_REV_1
10/13



NOTE

MAKE A NOTE OF THE SERIAL NUMBERS OF YOUR MACHINE & ENGINE AND ALWAYS QUOTE THEM IN ANY COMMUNICATION WITH PERSONNEL AT DENNIS.

MACHINE SERIAL NUMBER

Introduction

The **SISIS Rolaspikes** is virtually maintenance-free, and tines can be replaced should they become worn.

It is advisable to read the instructions carefully. Proper care and attention will enable the machine to give a continuous, satisfactory, and reliable service.

In the case of any difficulty, or if further information or advice is required, our Service Department is always at your call. In the interests of speed and accuracy of information please quote the serial number of the machine when making enquiries.

For the machine, this is to be found on a plate attached to the side frame. We suggest you write the numbers above.

Contents

	Page
Serial Numbers.....	2
Introduction.....	2
Technical Data.....	2
Operating Instructions	3
Parts Listings.....	4
Notes	5

Technical Data

Model	Rolaspikes		
Model Reference	FS1271	FS1169	FS1267
Length (mts)	1.2	1.8	2.4
Weight (Kg)	39	60	73
Number of Tines	312	468	624
Number of Holes per Sq. Mtr	936 (50mm x 50mm Sq. Pattern)		
Single Play Mounting Frame	FS870		
Twin Play Mounting Frame	FS870/1123		
Quadraplay	FS758		



CAUTION

PLEASE READ THESE OPERATING INSTRUCTIONS CAREFULLY BEFORE COMMENCING WORK.

We want you to obtain the best performance from this machine. If you have any difficulty in carrying out the following instructions please contact SISIS direct or your local SISIS Territory Manager or SISIS Dealer.

OPERATING PRINCIPAL

The SISIS **Rolaspikes** is a tractor mounted, Sorrel type roller.

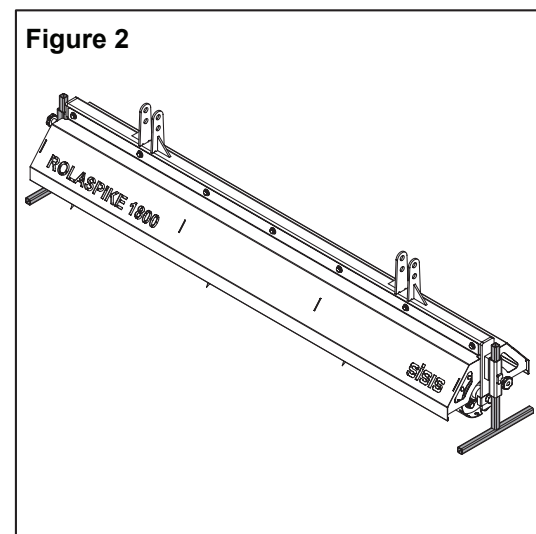
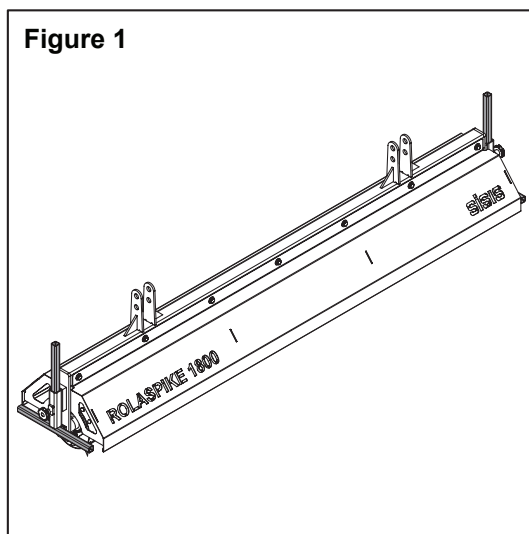
The tines are arranged in a helix pattern to run smoothly across the ground and are made from a hardened carbon steel and have a maximum penetration depth of 50mm (2ins) at 7mm diameter (9/32ins).

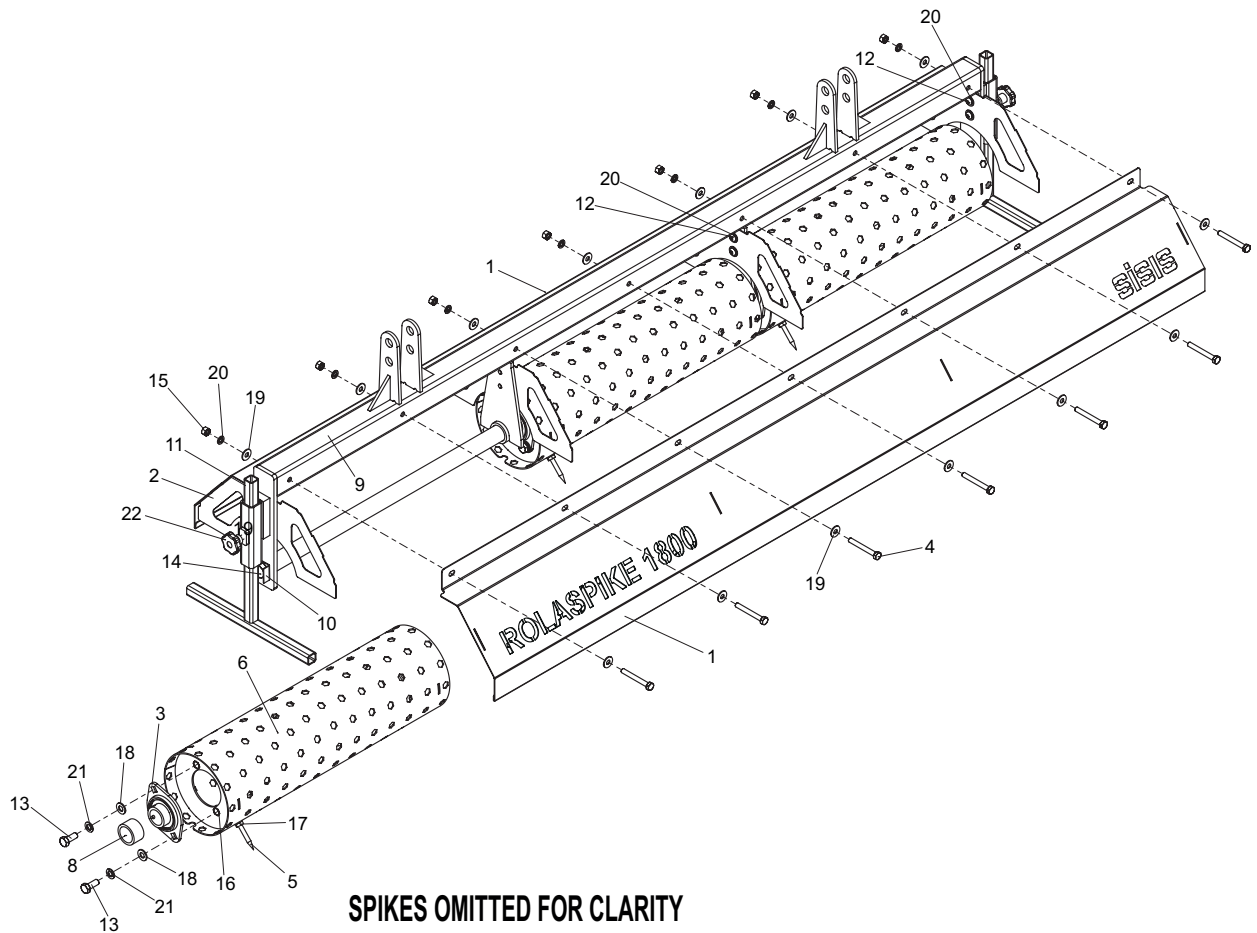
The tines are threaded and screwed into the drums and may be replaced when worn.

The Rolaspikes are attached to the SISIS Single Play, Twin Play or Quadraplay frame which is 3 point mounted onto the tractor rear lift arms.

When fitted to the Twin Play or Quadraplay other SISIS implements may be used in conjunction with the Rolaspikes.

The Rolaspikes are fitted with stand legs at both ends. These should be retracted and locked when in use (**See Figure 1**) and lowered and locked before removing the Rolaspikes from the tractor (**See Figure 2**). This will ensure the tines do not contact the ground when on hard standing and protect the tines from damage.





1.01

Rolaspik

Item No.	Part No.	Description	Quantity
1	403057	Guard 1200	2
1	401581	Guard 1800	2
1	403053	Guard 2400	2
2	401583	Guard Support	AR
3	D1921	Bearing SB PFL206	6
4	E1-1114	Hex Bolt M8 x 65	7
5	F37287	Roller Spike Tine	AR
6	F37735	Rolaspik Drum (180 - 602)	AR
7	403056	Shaft 1200	1
7	F37850	Shaft 1800	1
7	403052	Shaft 2400	1
8	F37851	Spacer	AR
9	403054	Frame W.A. 1200	1
9	F37852	Frame W.A. 1800	1
9	403050	Frame W.A. 2400	1
10	F37853	Tab Washer M16	2
11	F37854	Stand Leg	2
12	SP01012	Button Head M8 x 12	AR
13	SP01035	Hex Set Screw M10 x 25	AR
14	SP01037	Hex Set Screw M16 x 30	2
15	SP02005	Nut M8 Std	AR
16	SP02046	Rivnut Hex M10 (1.0-3.5) [No Head]	AR
17	SP02048	Rivnut Hex M8 (0.5-3.0) [Headed]	AR
18	SP03011	Washer M10 Form A	AR
19	SP03015	Washer M8 Form C	AR
20	SP03029	Washer M8 Spring Lock	AR
21	SP03034	Washer M10 Spring Lock	AR
22	SP14009	Knob Plastic M8 Male	2

sisis®

SISIS, Ashbourne Road, Kirk Langley, Derbyshire, DE6 4NJ, England.

Tel: +44 (0) 1332 824 777 | Fax: +44 (0) 1332 824 525 | Email: info@sisis.com | www.sisis.com

A division of Howardson Ltd. - a proudly British company
Company reg no 641526 - Vat No GB 345 9918 12