

# sisis

World-class turf maintenance equipment

## OPERATING INSTRUCTIONS

# SUPATURFMAN

MACHINE REFERENCE SMA/444/2/6

SERIAL NUMBER .....

CN CODE 8432 29 10



SISIS, Ashbourne Road, Kirk Langley, Derbyshire, DE6 4NJ, England.  
Tel: +44 (0) 1332 824 777 | Fax: +44 (0) 1332 824 525 | Email: [info@sisis.com](mailto:info@sisis.com) | [www.sisis.com](http://www.sisis.com)

A division of Howardson Ltd - a proudly British company  
Company reg no 641526 - Vat No GB 345 9918 12

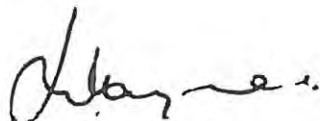
# EC DECLARATION OF CONFORMITY

We the undersigned

SISIS EQUIPMENT (Macclesfield) LIMITED

Certify that the	Aerator
Make	SISIS
Type	SupaTurfman
Series	444/2/6
Conforms to EC Directives and amendmnts	2006/42/EC
Standard	BS7370

**This certificate applies only to NEW equipment supplied  
by SISIS or our authorised dealer**



J.W. Hargreaves  
Director

Certificate Number  
FS555

We want you to obtain the best performance from this machine. If you have any difficulty in carrying out the following instructions please contact us or your local SISIS Territory Manager or SISIS Dealer.

The SISIS SupaTurfman is based on the highly popular AutoTurfman, redesigned and made wider so that turf areas may be aerated faster. A typical bowling green (41 yards x 41 yards) can be aerated in approximately 1½ hours with a range of tines.

## DESIGN FEATURES

The SISIS SupaTurfman consists of a drum which rotates on roller bearings. The drum side plates are made from cast iron whilst the tine shafts are made of steel. Each spring tine bar rotates on nylon bearings and the tines exit the ground at the correct angle, giving minimum surface disturbance. The Briggs & Stratton 5hp ic engine powers a pulley to a layshaft driven by V belts. This, in turn, drives a chain directly to the tine drum and a chain to the transport wheels, which are engaged by a sprung plunger on each wheel. A transport trolley may be fitted and the spiker slitter.

## SAFETY

### ALWAYS

read the operating instructions carefully and understand the controls before commencing work

be extra careful when using petrol or diesel fuel. DANGER no smoking or naked lights

before starting work always visually check machines for damage or wear to working parts such as blades or tines

look behind before starting to reverse and watch out for children or pedestrians

keep hands and feet clear of moving parts and remember that tine cylinders and drums can continue to rotate even after the power unit is switched off. Learn to respect powered machines

switch off the power before making adjustments or repairs and never lift or carry a machine whilst any parts are moving.

## DO NOT

allow any unauthorised person to handle machines in any way at any time

## ASSEMBLY

Your SISIS SupaTurfman will be supplied without tines fitted. When fitting tines, place the drilled end of the tine into the large holes in the tine bar and secure with pins and clips provided. It is essential that the hollow coring tines are fitted with the open side facing the centre of the drum. These should be set to just clear the wheels and should not be in contact with them.

## TINE BARS

Check the tension of the springs from time to time ensuring that the tine bars click back to their stop under tension. When operating on very soft ground, soil may build up on the tine bar stops. This must be removed otherwise the tines cannot enter the soil at the correct angle and damage may be caused to the turf.

## TINES

### Round Pointed Tines

#### Summer

Help moisture and air to get to the grass roots during the growing season, particularly useful for very hard conditions.

### Coring Tines

#### Autumn

Remove cores of soil to relieve compaction caused by play and rolling or to make soil exchange. We recommend use of the 75mm (3ins) coring tine.

### Jumbo Tines

This larger bore tine provides two functions in combating some of the problems associated with fine turf. Firstly the larger hole produced allows more effective use of top dressings. Secondly when used at a controlled shallow depth they remove a good sized 'plug' of thatch.

### Slitting Tines

#### Autumn/Spring

Encourage new root growth and permit the entry of fertilisers and dressings.

**IMPORTANT** Clean and oil all tines after use, making sure that hollow tines are cleaned inside. Lubricate the tine bar pivot bushes periodically with a few drops of oil at each of the square section of each bar.

**DRUM DRIVE/WHEEL DRIVE ADJUSTMENT**

Looking from the rear or handle end of the machine wheel drive chain tensioner is located in the slot on the right hand side plate. Loosen nut on chain tensioner and push chain tensioner upwards until there is approximately 6mm (1/4in) of play in the chain. NOTE over tensioning chains may cause damage and premature wear to this assembly.

**ENGINE VEE BELT/DRIVE CLUTCH ADJUSTMENT**

To adjust tension on V belt drive to engine. Loosen the 4 bolts securing the engine to the baseplate and move the engine in the slots until the desired tension is achieved.

To adjust V belt clutch cable, remove the top guard. This will reveal the cable end. Adjust the cable to the desired tension by loosening the nuts on the threaded portion of the cable end and adjust the cable to the desired tension. Always ensure that the securing nuts are retightened and the guard is replaced.

**ALWAYS ENSURE NUTS ARE RE-TIGHTENED  
AFTER ADJUSTMENT**

**DO NOT ATTEMPT TO MAKE ANY ADJUSTMENT  
TO THE  
MACHINE WHILE THE ENGINE IS RUNNING**

**MAKE SURE THE ENGINE ISOLATOR SWITCH IS  
IN THE OFF POSITION BEFORE ATTEMPTING  
TO MAKE ANY ADJUSTMENT**

**OPERATION**

Adjust the handle to obtain the most comfortable operating height. To do this lift up the handle plunger and move the handle up or down the quadrant as required. Release the handle plunger and allow the pins to engage the holes nearest to the selected position. (It is worth testing your SupaTurfman out on spare ground before using it on fine turf).

The ratchet pawls on both wheels must be disengaged when operating the aerator. If they are engaged, the transport wheels, which are geared at a higher rate than the aerator drum, will skid and tear your valuable turf. First check the oil level in the engine sump and top up if necessary. Start the engine (the makers instructions are supplied with our instruction book.) Having positioned the machine at start of a swath, with the drum clear of the ground, pull in the clutch lever to operate the tine drum and push forward a little whilst lowering the tine drum to the ground. This will assist the drive and will prevent tearing of the turf whilst drive is taking place. The aerator will then be pulled across the turf by its tines.

It is only necessary to guide the machine with the handle but the handle may be lifted to apply extra weight on its tines for deeper penetration on hard ground. At the end of the swath depress the handle and lift the tines clear of ground and manoeuvre into position at the beginning of the swath.

**ATTACHMENTS**

The following attachments are available:-

Spiker Slitter (35ins)	ref SS/3T	90 cm
---------------------------	-----------	-------

**SPECIFICATION**

Model reference	SMA/444	
Length - handles in position low	116cm	62ins
Height - handles in position low	102mm	40ins
Overall width	840mm	33ins
Working width	310mm	12ins
Weight	1.41kg	310lbs
Engine	5hp Briggs & Stratton ic	
Speed	1.68km/h max	
Ground coverage - bowling green	37.5m x 37.5m	41ydsx41yds
completed in	1 <sup>1</sup> / <sub>2</sub> hours	
Pitch	100mmx100mm	4ins x 4ins
Interchangeable tines	Solid	F34682
32 per set	Hollow	F34984
	Pencil	F35079
	Chisel	F35078





# PARTS LIST & DRAWINGS

## SUPATURFMAN

MACHINE REFERENCE	SMA/444/2/6
SERIAL NUMBER	.....
CN CODE	8432 29 10

---

**SPARES HOTLINE 01625 503030**

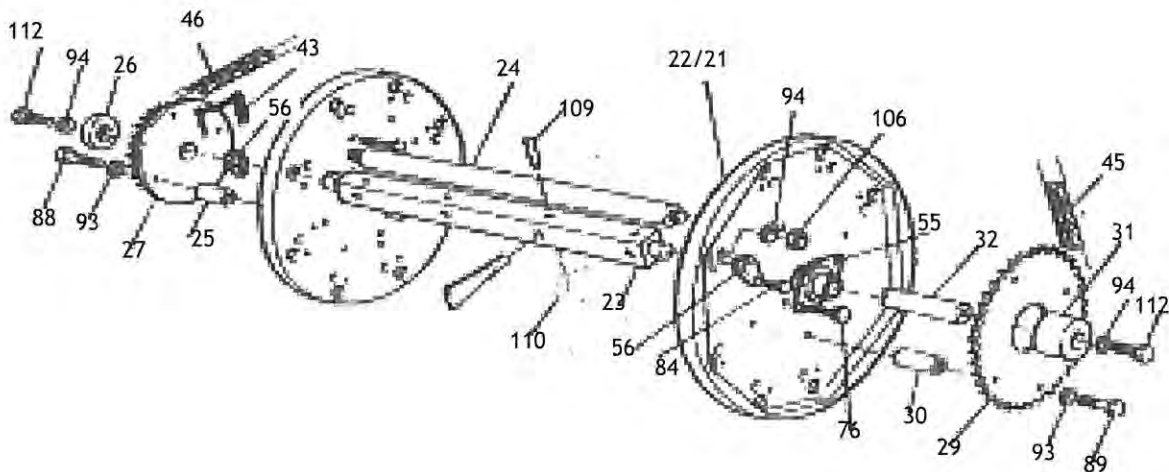
Website [www.sisis.com](http://www.sisis.com)

<i>item</i>	<i>part</i>	<i>description</i>	<i>qty</i>	<i>item</i>	<i>part</i>	<i>description</i>	<i>qty</i>
1	33312	chassis assembly	1	60	2097	compression spring	2
2	33451	countershaft	1	61	1800	compression spring	2
3	30518	engine clamp	2	62	1356	cable clip	4
4	33324	axle	1	63	1442	clutch lever	1
5	30521	ratchet mount	2	64	1406	clutch cable	1
6	30522	wheel hub	2	65	1394	stop switch	1
				66	1012	parallel key	1
				67	1013	parallel key	1
9	30556	pivot pin	2	68	1004	parallel key	1
10	33322	handle	1	69	1947	grease nipple	2
11	33320	handle frame	1	70	1043	split pin	6
12	3323	handle plunger	1	71	8165	parallel key	3
13	30528	chain tensioner bush	1				
14	30529	chain tensioner bush	1	73	8739	coach bolt	6
15	33452	drive guard	1	74	8224	coach bolt	1
16	30530	spacer	1	75	20254	coach bolt	1
17	30527	cable support	1	76	20792	coach bolt	4
				77	1306	socket setscrew	1
				78	8065	socket setscrew	2
				79	8757	cap head screw	8
21	33326	LH piercing unit sideplate	1	80	1938	socket setscrew	8
22	33325	Rh piercing unit sideplate	1	81	1/1076	setscrew	5
23	33313	tine bar assembly	8	83	1/1097	bolt	1
24	33314	stay bar	8	84	1/1095	setscrew	16
25	1/2898	spacer	4	85	1/1105	setscrew	12
26	2907	spacer	3	86	8098	bolt	4
27	2909	sprocket	1	87	1951	setscrew	6
28	6771	sprocket	1	88	1/1126	bolt	4
29	2910	plate wheel	1	89	1/1130	bolt	4
30	1/2899	spacer	4	90	1130	bolt	1
31	6742	spacer	1	91	1/1070	light washer	5
32	33319	piercing unit shaft	1	92	1/1062	spring washer	4
33	7044	LH free wheel ratchet	1	93	1/1063	spring washer	16
34	7045	RH free wheel ratchet	1	94	1065	spring washer	18
35	1/5222	drive pin	2	95	1539	mudguard washer	2
36	1/5223	drive pin lever	2	96	1/1076	light washer	4
37	6742	collar	1	97	1/1083	light washer	2
38	2908	chain pinion	1	99	1/1080	heavy washer	2
39	3821	vee pulley	1	100	20887	nameplate disc	1
40	30686	ve epulley	1	101	1/1220	nyloc nut	16
41	6686	chain pinion	2	102	1/1223	nyloc nut	16
42	2932	wheel and tyre	2	103	1/1217	nyloc nut	1
43	2896	spring and chain assembly	8				
44	4395	engine	1	105	1223	nyloc nut	1
45	20121	chain	1	106	1/1228	nyloc nut	16
46	8007	chain	1	107	1/1221	lock nut	4
47	2934	vee belt	2	108	8360	wheel nut	6
48	8435	idler pulley	1	109	33407	tinepin	34
				110	20773	retaining pin	34
50	1398	sel loc pin	2				
				112	1/1153	setscrew	2
52	2992	oilite bearing	2				
54	2441	flange bearing	2				
55	1588	bearing	2				
56	1511	nylon bearing	16	117	1/1061	spring washer	6
57	8032	flange bearing	2	118	1/1078	plain washer	1
				119	1071	plain washer	6
59	8129	oilite bearing	3	120	33321	wheel bracket	1

item	part	description	qty	item	part	description	qty
122	1/5223	drive pin lever	1	128	30538	handle	1
123	8733	wheel and tyre	2	129	8256	hnd grip	1
124	1398	sel lok pin	1	130	1951	setscrew	10
125	8134	external circlip	2	131	1800	R clip	2
126	4535	spring	1	132	8486	oilite bearing	2
127	30534	drive pin	1	134	1/4416	implement bracket	2

### TINE UNIT ASSEMBLY

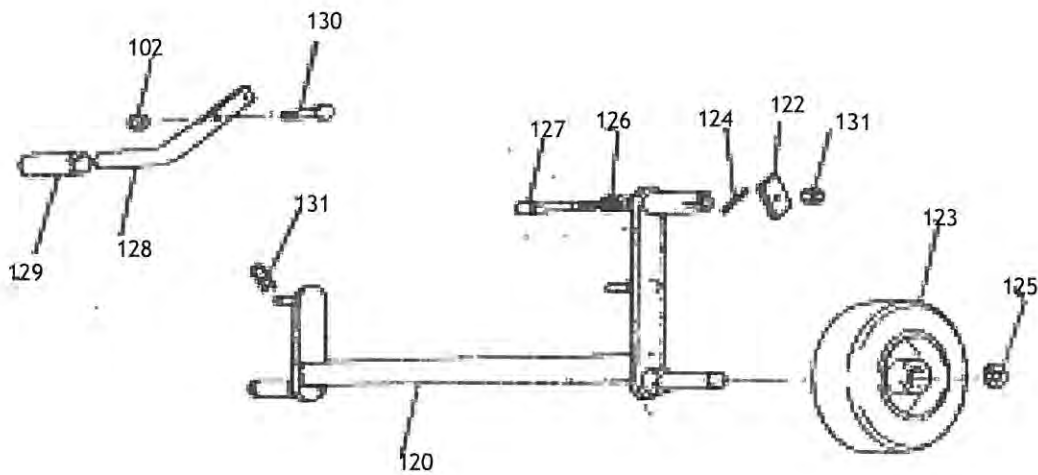
item	part	description	qty	item	part	description	qty
21	33326	LH piercing unit sideplate	1	46	8007	chain	1
22	33325	RH piercing unit sideplate	1	55	1588	bearing	2
23	34680	tine bar assembly	8	56	1511	nylon bearing	16
24	33314	staybar	8	84	1/1095	setscrew	16
25	1/2898	spacer	4	88	1/1126	bolt	4
26	2907	spacer	3	89	1/1130	bolt	4
27	2909	sprocket	1	93	1/1063	spring washer	16
29	2910	platewheel	1	94	1065	spring washer	18
30	1/2899	spacer	4	106	1228	nut	16
31	6742	spacer	1	109	21313	taper pin	34
32	33319	piercing unit shaft	1	110	21597	split pin	34
43	2896	spring and chain assembly	8	112	1/1153	setscrew	2
45	20121	chain	1				



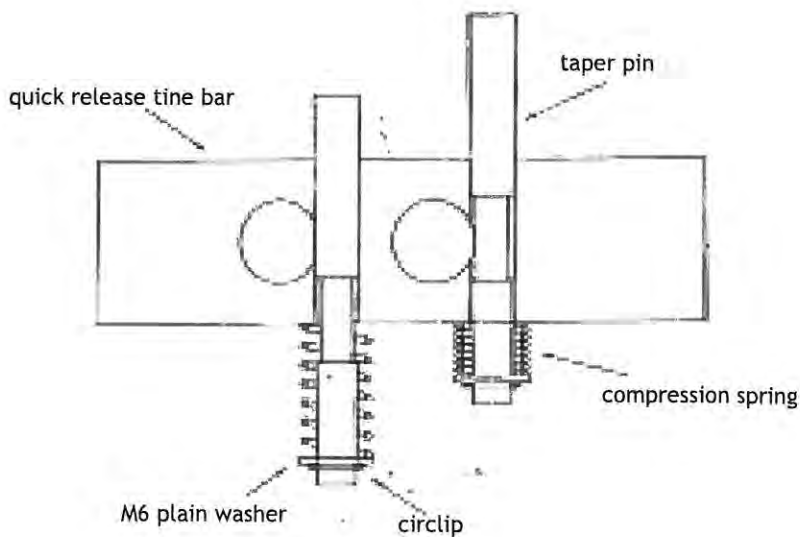


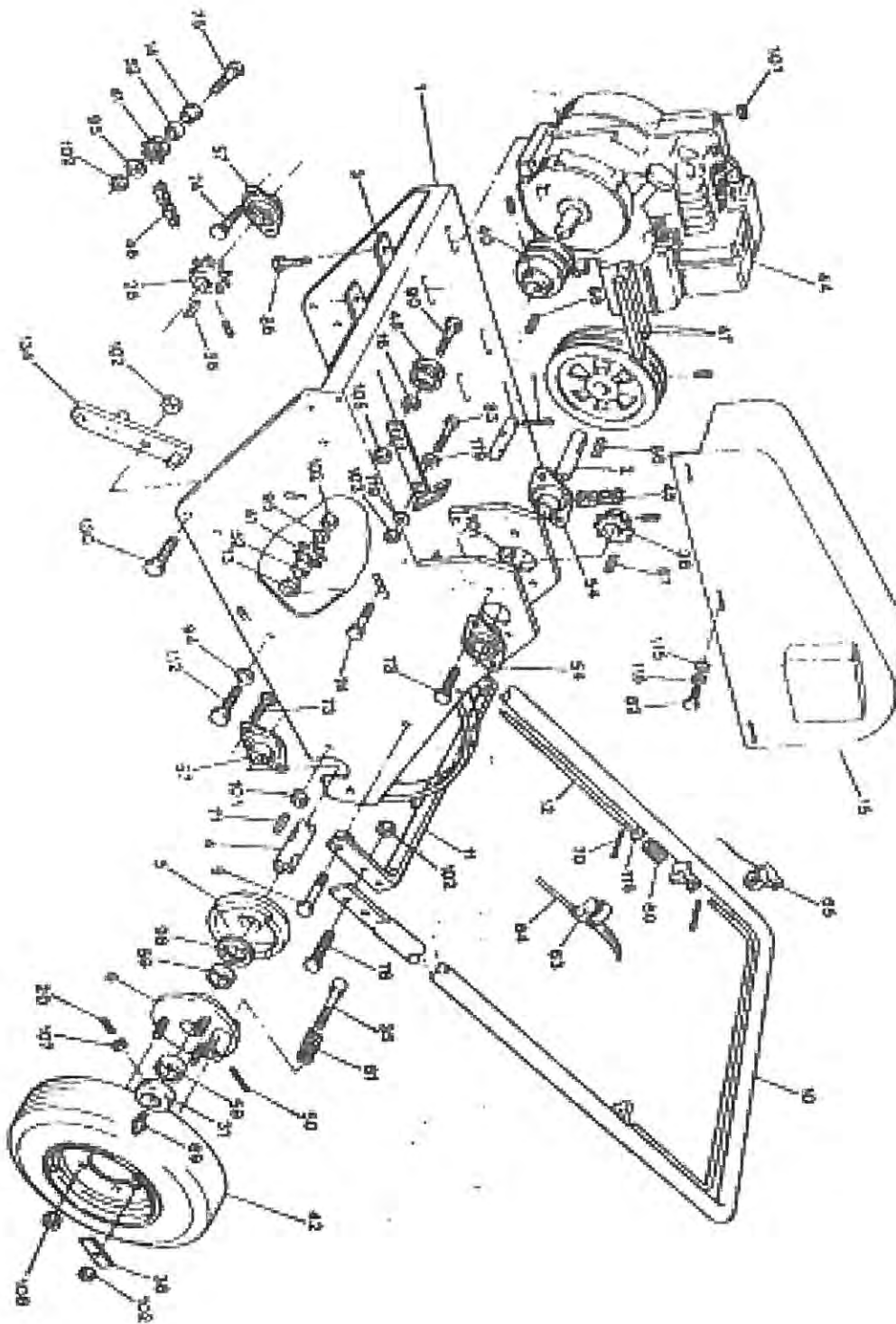
**TRANSPORT TROLLEY**

item	part	description	qty	item	part	description	qty
102	1/1223	nut	3	126	4535	spring	1
120	3321	wheel bracket	1	127	30524	drive pin	1
122	1/5223	drive pin lever	1	128	30583	handle	1
123	8733	wheel and tyre	2	129	8256	hand grip	1
124	1398	sel lk pin	1	130	1951	setscrew	2
125	8134	circlip	2	131	1899	R clip	2



**TAPER PIN ASSEMBLY**





# sisis VIBRATION LEVELS

Method Used	Monitran VM1100 with hand held sensor
Machine Name	SupaTurfman
Machine Reference	SMA/444/2/6
Engine	Briggs & Stratton
Vibration Level	1.5MS <sup>2</sup>

ALL READINGS TAKEN AT FULL REVS

## PERSONAL SAFETY EQUIPMENT

- |                    |                                     |                    |                          |
|--------------------|-------------------------------------|--------------------|--------------------------|
| Use Safety Glasses | <input type="checkbox"/>            | Use Breathing Mask | <input type="checkbox"/> |
| Use Safety Gloves  | <input checked="" type="checkbox"/> | Use Ear Protectors | Optional                 |
| Use Safety Boots   | <input checked="" type="checkbox"/> |                    |                          |

# sisis NOISE MEASUREMENT REPORT

Machine SupaTurfman  
Model SMA/444/2/6  
Engine Briggs & Stratton Reduction Box 6-1

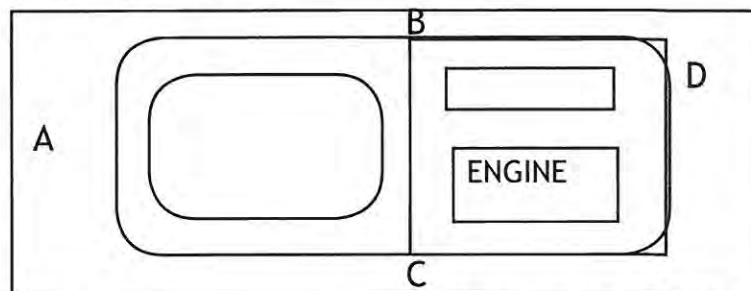
Type of Instrument Used for Test  
Channel Electronics SLM7  
(complies with BS3489-1962 IEC 123 ANSA S 14(2)Z37)

Noise Levels dBA

## Position

- A) at operators ear level  
1 1/2 m from ground level
- B) 1m from machine
- C) 1 1/2 m from ground level
- D)

## Sketch of Measuring Position



Weather Dry Ground Conditions

## Remarks

Signed

Date 19th December