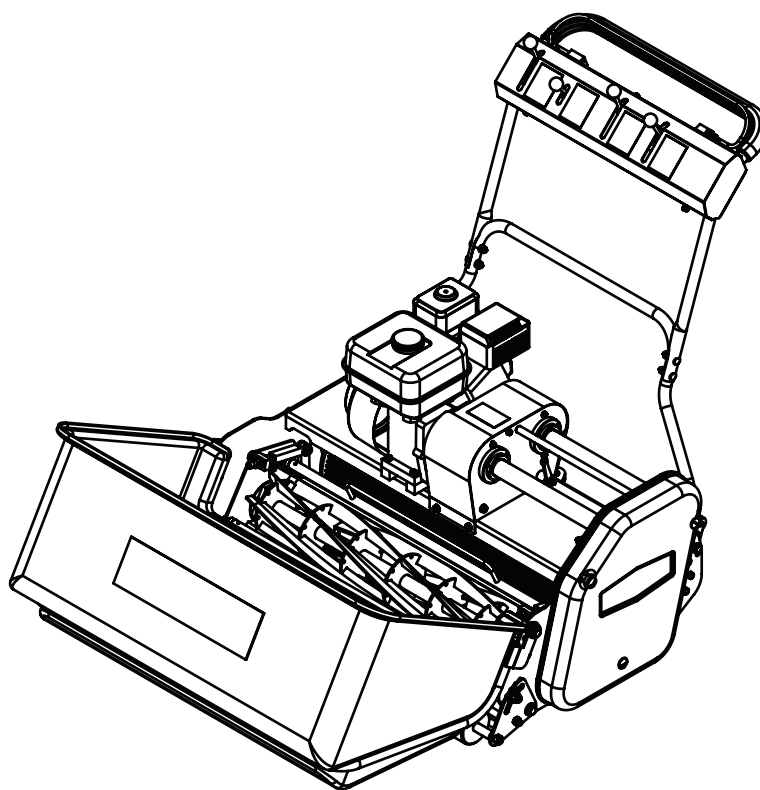


# DENNIS

## G-SERIES



## G-SERIES CASSETTE MOWER INSTRUCTION MANUAL

DENNIS, Ashbourne Road, Kirk Langley, Derby, DE6 4NJ, United Kingdom

Telephone:- 01332 824777

Fax:- 01332 824 525

E-mail:- sales@dennisuk.com

E-mail:- spares@dennisuk.com

[www.dennisuk.com](http://www.dennisuk.com)

SP20004\_REV\_2  
10/12

# Product Application Matrix

Application	FT	Razor Range	Razor 560	Simplex Ultra 560	G560 Range	SuperSix: G680	G660/G760 Range	Premier G860	Contractor Range	Bray Hand	S500 Tools	Gang Plus	Mower
Bowling Green		✓	✓	✓			✓			✓	✓	✓	
Cricket Ground Maintenance: square	wicket	✓	✓	✓						✓	✓	✓	
outfield	✓				✓	✓	✓	✓					
Football Pitch							✓	✓				✓	
Golf Course Maintenance: Greens	Tees	✓			✓	✓	✓	✓		✓	✓		
Ornamental	✓	✓	✓	✓	✓	✓			✓	✓			
Croquet Green		✓	✓	✓	✓		✓	✓		✓		✓	
Grass Tennis Court		✓	✓	✓	✓		✓			✓	✓	✓	
Race Course Maintenance: Ornamental	Parade Ring	✓			✓	✓	✓	✓	✓	✓			✓
Rugby Pitch							✓	✓				✓	
Hockey Pitch							✓	✓					
Sports Club Maintenance		✓	✓	✓	✓	✓	✓	✓	✓	✓	✓	✓	✓
Schools, Colleges & University Grounds		✓	✓	✓	✓	✓	✓	✓	✓	✓	✓	✓	✓
Cemetery Maintenance				✓	✓	✓	✓						
Contractors, Private Lawns & Commercial	✓	✓			✓	✓	✓	✓		✓			✓
Local Authority & Government Contracts	✓	✓	✓	✓	✓	✓	✓	✓	✓	✓	✓	✓	✓
Ornamental Lawn	✓	✓			✓	✓	✓	✓	✓	✓			✓



**NOTE**

THIS INFORMATION IS INTENDED FOR GUIDANCE PURPOSES ONLY. WE RECOMMEND THAT YOU DISCUSS YOUR SPECIFIC REQUIREMENT WITH OUR HEAD OFFICE, SALES MANAGERS OR YOUR LOCAL DENNIS DEALER.

# Certificate of Conformity

## G-Series Cylinder mowers powered by Honda GX Petrol Engine

**Manufacturer:-** Howardson Ltd, Howardson Works, Kirk Langley, Derby, DE6 4NJ. UK

**Owner of Technical Document:-** Mr I.D. Howard, Howardson Ltd, Howardson Works Kirk Langley, Derby, DE6 4NJ, UK

**Notified Body:-** AV Technology Ltd, AVTECH house, Arkle Avenue, Stanley Green Trading Estate, Handforth, Cheshire, SK9 3RW, UK

I the under signed Declare that these machines:-

Model	Cutting Width	Power (Honda)	Measured Sound Power Level	Guaranteed Sound Power Level	Serial Number
G660	26" (660mm)	GX160	95dB Lwa	98dB Lwa	See Product ID range
G760	30" (760mm)	GX160	95dB Lwa	98dB Lwa	See Product ID range
G860	34" (860mm)	GX200	95dB Lwa	98dB Lwa	See Product ID range

**Tested at:-** Howardson Works test site September 2011

Complies with the applicable requirements of:-

- Machine Directive 2006/42/EC
- Noise Directive 2000/14/EC (Annex VI Procedure 1)

**Managing Director**



Ian Howard

## Serial Numbers



### **NOTE**

*MAKE A NOTE OF THE SERIAL NUMBERS OF YOUR MACHINE & ENGINE AND ALWAYS QUOTE THEM IN ANY COMMUNICATION WITH PERSONNEL AT DENNIS.*

### **MACHINE SERIAL NUMBER**

### **ENGINE SERIAL NUMBER**

## Introduction

The reliability and quality of performance of the **DENNIS G-SERIES** depends upon some simple care maintenance carried out regularly. This manual has been prepared to allow the user to carry out all such work.

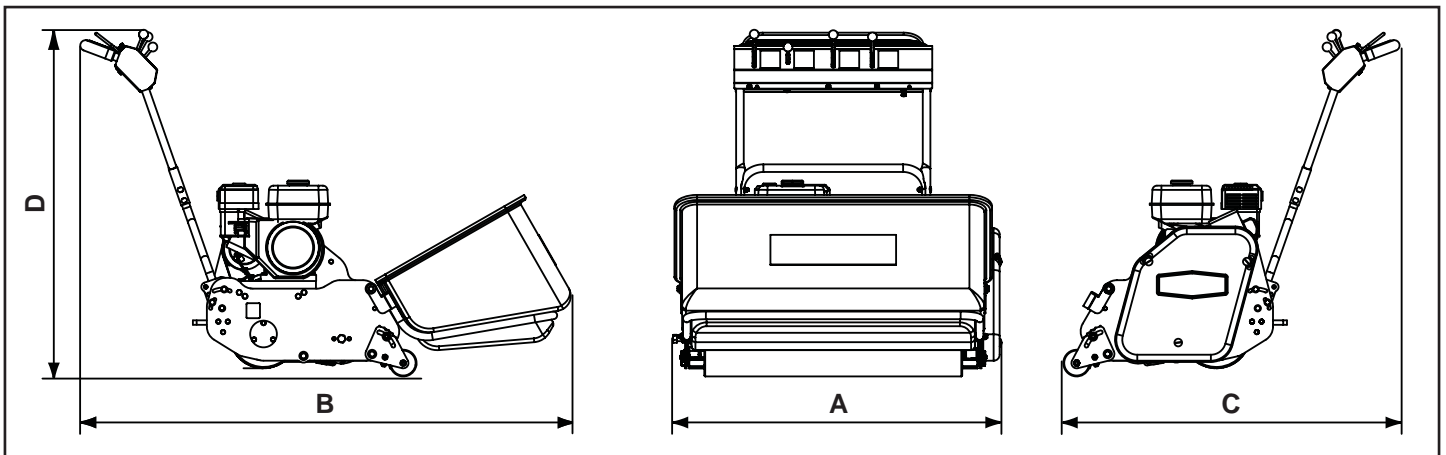
It is advisable to read the instructions carefully. Proper care and attention will enable the machine to give a continuous, satisfactory, and reliable service. Failure to carry out regular lubrication and maintenance as outlined in this manual may render any guarantee or warranty invalid.

In the case of any difficulty, or if further information or advice is required, our Service Department is always at your call. In the interests of speed and accuracy of information please quote the serial numbers of the machine and engine when making enquiries.

For the mower, this is to be found on a plate attached to the side frame. The engine number is stamped on either the crank case or the gear casing facing towards the front of the machine. We suggest you write the numbers on the front page of this book.

	<b>Page</b>
Product Application Matrix.....	2
Declaration of Conformity.....	3
Serial Numbers.....	3
Introduction.....	3
Technical Data.....	4
Machine Description.....	5
Important Safety Instructions.....	6
Controls.....	7
Operating Instructions.....	8 - 9
General Adjustments.....	10 - 11
Removing The Cassette Unit.....	12
Routine Maintenance.....	13 - 14
Storage.....	14
General Lubrication.....	15
Guide To Cassette Use.....	16
Notes.....	17
Parts Listings.....	18 - 36

## Technical Data



Model	G660	G760	G860
A - Width (mm)	884	984	1084
B - Length with Grassbox (mm)	1635	1635	1635
C - Length without Grassbox (mm)	1121	1121	1121
D - Height (mm)	1119	1119	1119
Weight (Kg)	148	156	166
Cutting Width (mm)	660	760	860
Cylinder	6 or 8 blade		
Height of Cut (mm)	6 - 56		
Cut Performance (6 Blade)	95 cuts/m (88 cuts/yd)		
Cut Performance (8 Blade)	130 cuts/m (120 cuts/yd)		
Engine	Honda GX160	Honda GX160	Honda GX200
Drive System	"V" Belt		
Final Drive	Poly "V" high performance belts under constant tension		
Hand Arm Vibration (m/sec <sup>2</sup> )	2.6	2.6	2.6
Measured Sound Power Level dB(A) LWA	95	95	95
Guaranteed Sound Power Level dB(A) LWA	98	98	98

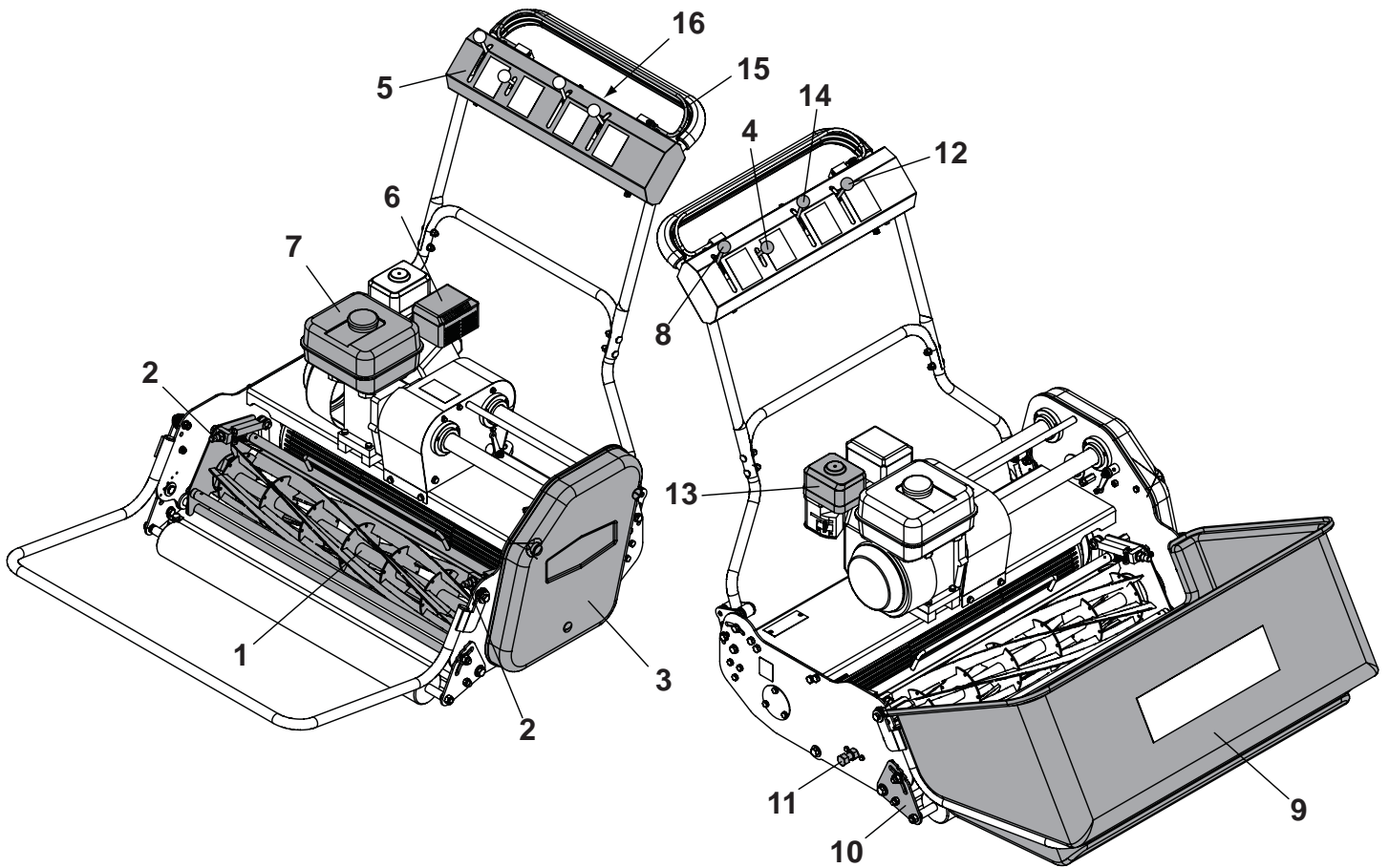
# Machine Description

Manufactured with a 26" (66cm), 30" (76cm) or 34" (86cm) cutting width, this range of machines is powered by either a 5.5hp (26" & 30") or 6.5hp air cooled, single cylinder, four stroke petrol engine.

The rear roller and cutter are controlled independently via belt clutches operated from the console on the upper handle bar. (ITEM 5). A parking brake is fitted for added safety when working on sloping ground.

In the design of the machine, special attention has been given to the importance of easy service and maintenance with the construction based on a sectional assembly system. These are the Engine Unit, the Cassette Unit, the Rear Roller Unit, and the Front Roller Unit, each of which can be readily removed individually from the main Frame Chassis Unit.

The interchangeable cassette system allows a variety of cassettes to be used for varying applications.



1. Cassette
2. Bottom Blade Adjuster Knob
3. Belt Guard
4. Throttle Control Lever
5. Operating Console
6. Exhaust
7. Fuel Tank
8. Brake Lever

9. Grassbox
10. Cutting Height Adjustment
11. Cassette Retaining Pin
12. Cassette Control Lever
13. Air Filter
14. Driving Control Lever
15. Deadmans Handle
16. On / Off Switch

# Important Safety Instructions

In order to operate the machine safely please follow these Health and Safety guidelines.

## TRAINING



### **CAUTION**

*READ THE INSTRUCTIONS CONTAINED IN THIS MANUAL WITH CARE. IF YOU ARE IN ANY DOUBT PLEASE ASK YOUR EMPLOYER OR CONTACT US DIRECT AT **DENNIS**.*

- Be familiar with the controls and the proper use of the equipment.
- Never allow children or people unfamiliar with these instructions to use the mower. Local regulations or insurance may restrict the age of the operator.
- Never mow while people, especially children, or pets are nearby.
- Keep in mind that the operator or user is responsible for accidents or hazards occurring to other people or their property.

## PREPARATION

- While mowing always wear substantial footwear and long trousers. Do not operate the mower barefoot or in open sandals.
- Thoroughly inspect where the equipment is to be used and remove all stones, sticks, wire, bones and other foreign objects.



**WARNING** *PETROL IS HIGHLY FLAMMABLE AND WILL DAMAGE GRASS IF SPILT.*

- A) Store fuel in containers specifically designed for this purpose.
  - B) Refuel out doors and do not refuel whilst smoking.
  - C) Add fuel before starting the engine. Never remove the cap of the fuel tank or add petrol while the engine is running or when the engine is hot.
  - D) If petrol is spilled do not attempt to start the engine but move the machine away from the area of spill and avoid creating any sources of ignition until the vapours have dissipated.
- Replace damaged or faulty silencers.
  - Before using the machine always inspect the safety devices including the cut off switch and the blades for excessive wear or damage. Replace if necessary.

## OPERATION

- Do not operate the engine in a confined space where dangerous **CARBON MONOXIDE** fumes can collect.
- Mow only in daylight or good artificial light.
- Avoid operating the machine in wet grass where feasible.
- Always be sure of your footing on slopes.
- Walk. Never run.
- Walk across the face of slopes, never up and down.
- Exercise extreme care on slopes when changing direction.
- Do not mow excessively steep slopes.
- Use extreme caution when reversing or pulling the machine towards you.
- Stop the blades if the mower has to be tilted for transportation when crossing surfaces other than grass and when transporting the mower to and from the area to be mown.
- Never operate the mower with defective guards or shields or without the safety devices, for example without the deflector plate or grassbox in place.
- Do not change the engine governor settings or overspeed the engine.
- Disengage all blades and drive clutches before starting.
- Start the engine carefully following the instructions with feet well away from the blades.
- Do not tilt the mower when starting the engine.
- Do not put hands or feet near or under rotating parts. Keep clear of the discharge opening at all times.
- Never pick up or carry the mower while the engine is running.

FOR THE LOCATION OF CONTROLS AND COMPONENTS REF "MACHINE DESCRIPTION", PAGE 5

## ON / OFF SWITCH (Item 16)

This switch stops the engine and can be used to do so at anytime during the operation of the machine. Ensure it is in the "ON" position before attempting to start the engine.

## DEADMANS CONTROL (Item 15)

This is an operator presence control. The engine will tick over without need for this to be depressed when the cylinder and drive are disengaged. This must be depressed before the drive or cylinder can be engaged. Failure to do so will cause the engine to stop.



### **NOTE**

*IF THE "DEADMANS CONTROL LEVER" IS DEPRESSED WHILE THE PARKING BRAKE IS ON THE ENGINE WILL STOP.*

## PARKING BRAKE CONTROL (Item 8)

This controls the parking brake. It is only to be engaged when the machine is stationary, it is **NOT** to stop the machine. Push lever forwards to engage and pull back to disengage.



### **NOTE**

*IF THE "DEADMANS CONTROL LEVER" IS DEPRESSED WHILE THE PARKING BRAKE IS ON THE ENGINE WILL STOP.*

## THROTTLE CONTROL (Item 4)

This controls the RPM of the engine and the resultant speed of the machine. Pushing the lever forwards will increase the RPM, pulling it back returns the engine to idle.

## DRIVE CONTROL (Item 14)

This controls the machine movement. Pushing the lever forwards will engage the belt clutch and cause the machine to drive. Returning it to the original position will cause the machine to stop.

## CYLINDER CONTROL (Item 16)

This controls the cylinder drive. Pushing the lever forwards will engage the belt clutch and cause the cylinder to rotate. Returning it to the original position will cause the cylinder to stop.



## **CAUTION**

*BEFORE YOU OPERATE THIS MACHINE YOU MUST READ AND STUDY THIS MANUAL. IF YOU ARE IN ANY DOUBT PLEASE ASK YOUR EMPLOYER OR CONTACT US DIRECT.*

### **PREPARATION FOR USE**

- Before commencing ensure the turf is free from stones or other obstructions which may damage the cassette unit.
- Set the height of cut to the required level (see page 10)
- Check the engine.
- Fill the fuel tank 3/4 full with unleaded petrol.
- Always check the oil levels of the machine prior to commencing. Full details are given in the **ENGINE** Manual, which accompanies this book. A daily check is recommended. (Recommended grade oil is SAE 10W-40).
- Disengage the cassette unit. (see next page)
- Set the throttle control on the handle bars to the idle position.



## **CAUTION**

*IMPORTANT INFORMATION PLEASE READ ALL THE DETAILS IN THIS SECTION AND FAMILIARIZE YOURSELF AND ALL MACHINE OPERATORS WITH THE CONTENTS.*

### **STARTING THE ENGINE**

Once the preparatory steps have been completed as outlined on page 7 the engine may be started. (See manufacturer operating manual for full details).

- 1) Switch on the fuel tap.
- 2) Switch the handlebar cut off switch to **ON**, or depress deadmans handle (Item 1)
- 3) Set the throttle control to a half open position.
- 3) Shift the choke lever to the appropriate position (Kubota engine set to **START** : Honda engine set to the **CLOSE** position). The choke is not required if the engine is warm or the air temperature high.
- 4) Grasp the recoil start handle until resistance is felt, then pull it with force.
- 5) Do not allow the starter grip to snap back against the engine. Return it gently to prevent damage to the starter.
- 6) Once the engine is started gradually 'open' the choke lever (move the lever towards the **RUNNING**, or **OPEN** position). Warm-up running of 3-5 minutes is recommended.

### **STOPPING THE ENGINE**

- 1) Set the throttle control to the **CLOSED** position.
- 2) Switch the handlebar cut off to **OFF** or release deadmans handle.
- 3) Close the fuel tap.

### **TO COMMENCE DRIVING (TRANSPORT BETWEEN SITES / NO CUTTING)**

- Ensure the "**Parking Brake**" is disengaged.
- Depress the "**Deadmans Handle**" (Item 15)
- Push the "**Drive Control Lever**" (Item 14) forwards.
- Set the "**Throttle Control Lever**" to increase / reduce speed.

### **TO STOP DRIVING**

- Pull the "**Drive Control Lever**" (Item 14) backwards.



## **TO COMMENCE CUTTING**

- Depress the “**Deadmans Handle**” (Item 15)
- Push the “**Cylinder Control Lever**” (Item 16) forwards.
- Push the “**Drive Control Lever**” (Item 14) forwards.
- Set the “**Throttle Control Lever**” to increase / reduce speed.

## **TO STOP CUTTING**

- Pull the “**Drive Control Lever**” (Item 14) backwards.
- Pull the “**Cylinder Control Lever**” (Item 16) backwards.
- Release the “**Deadmans Handle**” (Item 15)



### **NOTE**

*RELEASING THE “**DEADMANS CONTROL LEVER**” WITH THE CUTTER ENGAGED WILL CAUSE THE ENGINE TO STOP*

## **FITTING THE GRASSBOX (Item 9)**

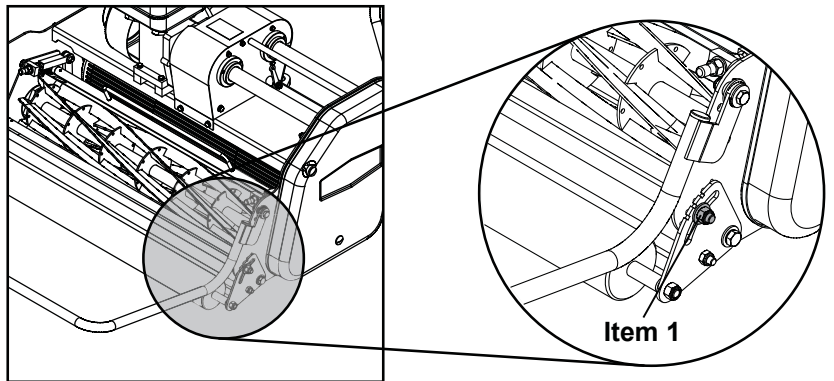
- Disengage the cylinder drive and wait for the cutter to stop rotating
- Hold the grassbox firmly on the lip of the aperture, place the lower front of the box against the front of the tubular cradle.
- Pivot the box about the cradle until it sits securely in position.

## SETTING FOR HEIGHT OF CUT

Always stop the engine before adjusting the height of cut. Failure to do this may result in serious injury. The length of grass after cutting and the depth of scarification / dethatching / brushing, depends on the setting of the front roller in relation to the main frame of the machine.

### To set:

- Slacken the clamp nuts on the front roller quadrants (Item 1) [19mm spammer].
- Rotate the quadrants, raising and lowering the machine. As a guide, there are notches in the quadrant and holes in the side plate. Align these on both sides to level the machine.



### **NOTE**

**DO NOT ATTEMPT TO USE THE DETHATCHING CASSETTES OR BRUSH CASSETTES ON TOO LOW A SETTING AS THIS WILL RESULT IN DAMAGE TO THE BLADES AND BRUSHES.**

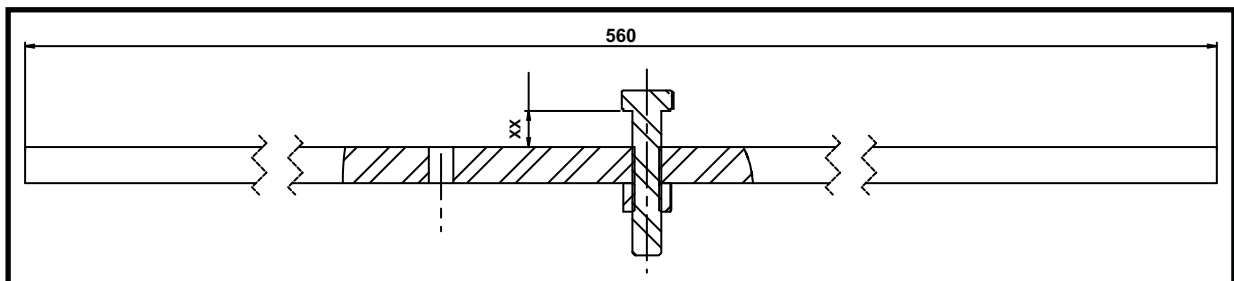


### **NOTE**

**DO NOT ATTEMPT TO SCARIFY ON TOO LOW A SETTING WHEN THE GROUND CONDITIONS ARE DRY AS THIS MAY CAUSE THE CLUTCH TO SLIP.**

To check the height of cut and that the machine is level a setting bar (229524) can be used. Place the bar between the front and rear rollers, resting the underside of the bolt head on the lip of the shear blade.

Either a ruler or pile of coins can be used to set the setting bar to the correct position. You are measuring the distance between the bar and the underside of the button head screw ('XX' in the Image below).

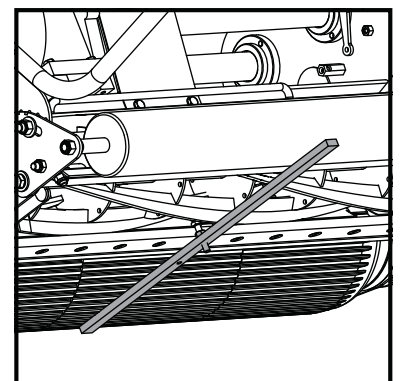


As an indication coins measure the following:-

- |                       |                       |                         |
|-----------------------|-----------------------|-------------------------|
| - 1p 1.58mm (0.063")  | - 2p 1.80mm (0.071")  | - 5p 1.73mm (0.067")    |
| - 10p 1.84mm (0.072") | - 50p 1.84mm (0.072") | - £1.00 3.14mm (0.124") |

Remember height of cut is effected by moisture of turf , weight of machine and the thatch density. Different makes of machine cut at different heights when set to the same position with the setting bar. We suggest you set it to a couple of mm above your planned height and then come down in height by trial.

Always check height of cut/operation with the setting bar provided. Check in two positions i.e. one at either end of the cassette. Failure to do this could result in an uneven cut.

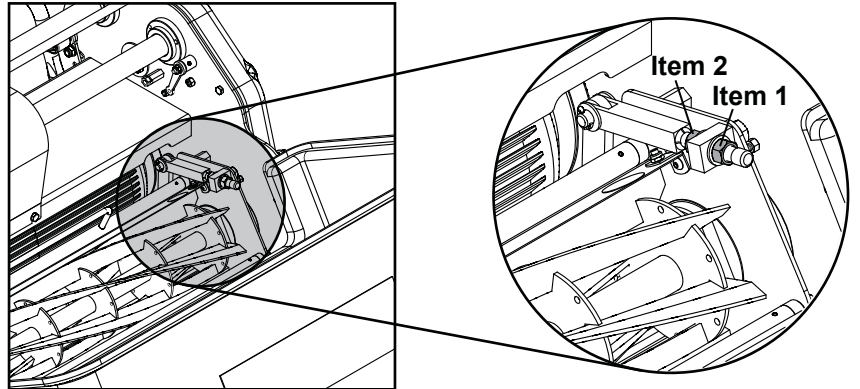


## SETTING THE CYLINDER

The cylinder cassette can be set either in or out of the machine. To remove the cassette see page 12.

### To set:

- Slacken 2-off lock nuts (item 1)  
[19mm spanner]
- Rotate nut (item 2) anti-clockwise to bring the blade towards the cylinder.
- Check the setting using thin paper along the length of the cylinder.
- Adjust until it cuts along the whole length.
- When set, tighten the lock nut (item 1)
- Recheck adjustment.
- **DO NOT** set the cylinder hard to the bottom blade. This will cause excessive wear of both components and increase fuel consumption.

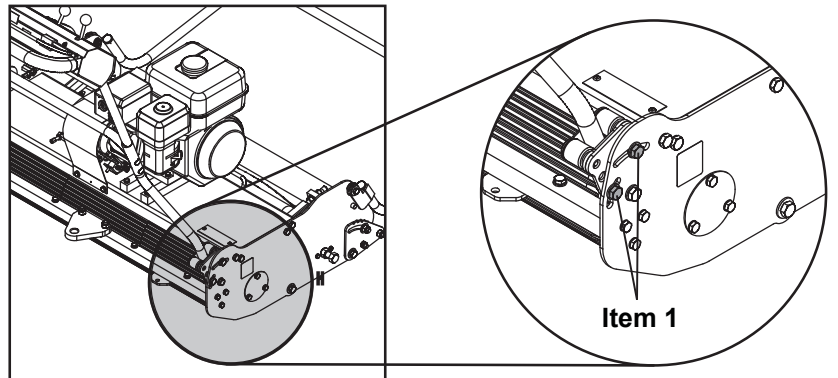


## HANDLEBAR ADJUSTMENT

The "Handle Bars" are adjustable to achieve the correct working height for the operator.

### To set:

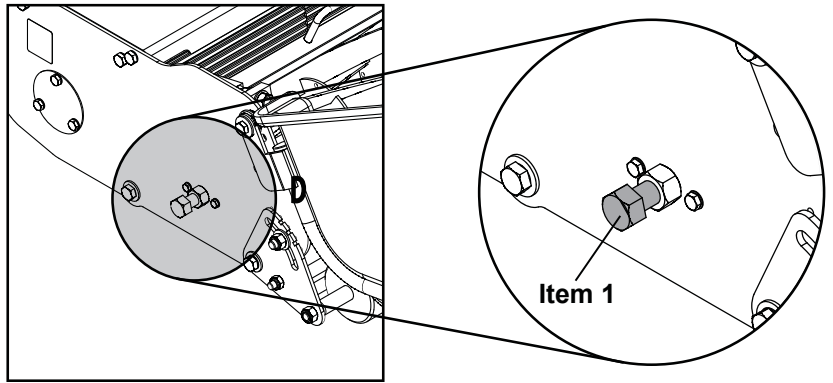
- Slacken 4-off nuts (Item 1) 1/4" turn  
[17mm Spanner]
- Raise / lower the |Handle Bar| to the desired position
- When set, tighten the nuts (Item 1)



## Removing The Cassette Unit

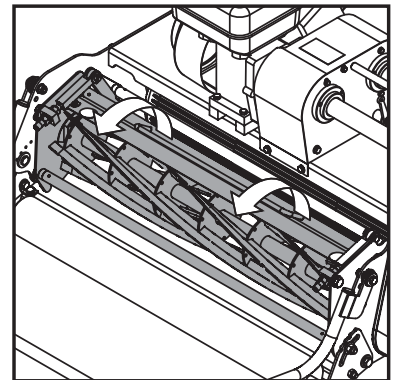
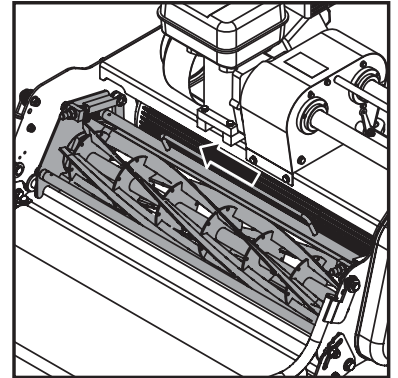
To remove the cassette unit for maintenance or to exchange cassettes the following procedure should be followed:-

- 1) Unscrew the bolt (Item 1) [24mm Spanner] for about half-an-inch (13mm) until the pip end is inside the nut on the side frame.
- 2) Slide the cassette unit along the tie bars as far as it will go until the cutter nut and coupling is clear of the three pins in the driving coupling.
- 3) Remove the unit from the chassis by lifting in a swinging motion from the back.



To replace the cassette unit :-

- 1) Place the front slots of the cassette unit frames on the two front retaining pins seen projecting from inside each frame.
- 2) Carefully lower the unit in a downward swinging motion until the rear slots of the cassette unit frame rest on the cross tie bar.
- 3) Move in a lateral direction away from the retaining pin until the three holes of the cassette nut and coupling are in full engagement with the three pins of the driving coupling.
- 4) Screw up the bolt (Item 1) [24mm Spanner], engaging the hole in the side frame on the opposite side. Do not over tighten.



## ENGINE

The machines are fitted with a Honda GX160 or GX200 petrol engine.  
For full specifications please refer to the manufacturers instruction manual included.

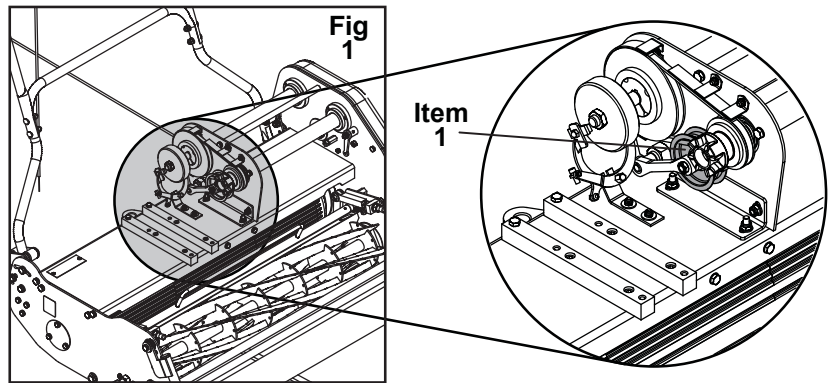
Area	Maintenance	First 4 Hours	First Month / 20 Hours	3 Months / 50 Hours	6 Months / 100 Hours
Engine Oil	Check Level	✓			
Engine Oil	Change		✓		✓
Air Filter	Check Condition / Clean		✓		✓
Spark Plug	Change				✓

## OIL / FUEL TYPE & QUANTITY - SPARK PLUG TYPE

Engine Model	Oil Type	Quantity (Ltr)	Fuel Type	Capacity (Ltr)	Spark Plug Type	Electrode Gap (mm)
Honda GX160 & GX200 Petrol	SAE 10W-40	0.6	Unleaded	2.5	BM6ES or BPR6ES	0.7 - 0.8

## ROLLER CLUTCH

The Primary Rear roller drive belt is shown in Fig 1. This is a special Kevlar V belt design for clutching applications. The Rear roller clutch pulley moves into tension the belt via a control cable. The tension in the cable can be adjusted as shown in Fig 1 [13mm spanner].



Under tensioning this belt will lead to slip and cause rapid wear. Over tension will put excessive strain on the belt and bearings.

The Secondary Rear roller drive belt is shown in Fig 2 (item1). This is a hard wearing poly-V belt. Belt tension is the single most important factor necessary for long, satisfactory service life of any belt drive.

Under-tensioning leads to belt slip causing rapid wear; over tensioning means excessive strain on belt and bearings. Between these two extreme conditions is a reasonable range of tension within which the belt will operate. Belt tension can be assessed by the 'deflection' method.



### **NOTE**

*CORRECTION CAN BE MADE BY ADJUSTMENT OF THE BELT TENSIONERS. REMOVE THE DRIVING BELT COVER. THE BELT TENSIONERS ARE RETAINED IN A SLOTTED HOLE ALLOWING ADJUSTMENT TO BE MADE ONCE THE HOLDING HEXAGON HEADED BOLTS HAVE BEEN LOOSENED. WHEN ADJUSTED CORRECTLY THE TENSIONERS SHOULD STILL ROTATE EASILY WITH FINGER PRESSURE. ENSURE THE TENSIONER BOLTS ARE SECURE BEFORE REPLACING THE COVER.*

"Belts will be sufficiently tensioned if the deflection force applied at mid span to produce a deflection equal to 16mm per meter of span distance falls between 5 and 9 Newtons per Rib" (TBA Belting).

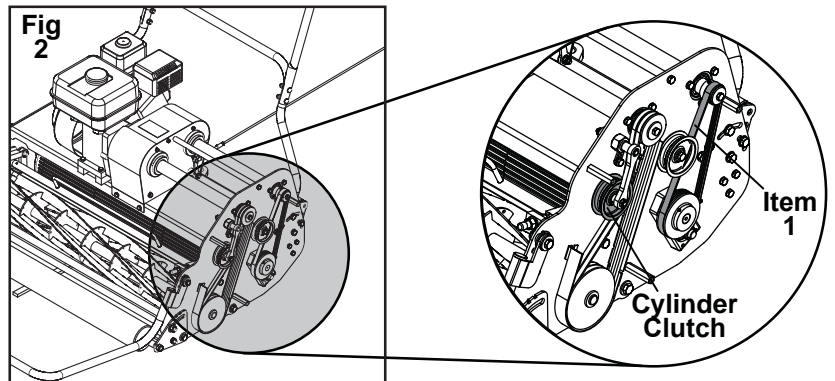
In practical terms this relates to about 5mm of deflection under moderate finger pressure on the non tensioner side.

If fitting new belts it is advisable to observe the drive for the first 20-30 minutes. It may be necessary to make an adjustment to compensate for the normal drop in tension during the run-in period.

## CYLINDER CLUTCH

The Cylinder drive belts are shown in fig 2 (item 2). There are special Kevlar V belts fitted in pairs and designed for clutching applications. The cylinder clutch pulley moves into tension the belt via a control cable. The tension in the cable can be adjusted as shown in fig 2 [13mm spanner].

Under tensioning this belt will lead to slip and cause rapid wear. Over tension will put excessive strain on the belt and bearings.



## CABLE ADJUSTMENT

Over time the cables that operate the clutch pulleys and the brake will need adjusting. This adjustment can be carried out at either end of the cables [10mm spanner].



### **NOTE**

*NEITHER CLUTCHES OR BRAKE SHOULD OPERATE WITH THE CONTROLS IN THE OFF POSITION.*



### **NOTE**

*ENSURE THE LOCK NUTS ARE TIGHT AND SECURE AND CHECK OPERATION IS SATISFACTORY BEFORE REPLACING THE CLUTCH COVER AND SCREWS.*

## Storage

The machine should always be kept in a clean dry place, free from condensation. After use ensure that the machine is thoroughly clean, dry and free from grass and mud. Before off season storage smear a thin layer of grease on to the cutter blades and the shear blade.

Under no circumstances must the machine be steam cleaned as this may remove grease from the pre packed bearings.

Because of the nature of lead free petrol we recommend that if the machine is being left unused for more than 2 weeks the carburetor is run dry. Allow the engine to run out of fuel with the fuel tap switched off.

## **REAR ROLLER**

### **(6-months)**

The main drive roller is split into three sections incorporating a differential gear system running in an oil bath. The old oil should be drained off and the bath replenished with 1 pint (550ml) of clean oil.

### **(1-month)**

A grease point is located under the belt guard on the side plate of the machine. This is to lubricate the internal spur gear that provides drive to the rear roller. Apply one pump of grease. Do not over grease.

## **CONTROL LEVERS AND CABLES**

### **(2-months)**

Apply a small amount of oil to the control cables. Flow down the protective cables can be assisted by operating the lever a few times after lubricating.

## **FRONT ROLLER ADJUSTERS**

### **(2-months)**

Apply a small quantity of copper grease or similar to the adjuster studs to prevent corrosion and ease adjustment.

## **6 BLADE CYLINDER (SEE PAGE 33)**

- For cutting fine turf areas.

## **8 BLADE CYLINDER (SEE PAGE 33)**

- For cutting ultra fine turf areas.

Settings - Expressed as above and below ground level i.e. by placing the setting bar between the front and rear rollers, the top of the bar represents ground level.

## **VERTICUTTER (SEE PAGE 38)**

Used from ground +3mm to ground -3mm to control thatch, cutting lateral growths and standing up lying grasses ready for cutting and lifting with the comb. Good for removing mosses. Start on the green at (say) +3mm.



**NOTE** *NOT FOR CUTTING SOIL, ONLY THATCH.*

**RESULT** - Speed improvement on greens, reduced end of season maintenance. Promotes healthy plant growth, promotes strong roots, and maximizes fertilizer penetration.

## **SCARIFIER (SEE PAGE 35)**

Used for ground to ground -10mm controlling thatch, removing thatch, cutting lateral growth, pruning roots, removing moss, aerating top layer for ingress of water, air, fertilizer and seed. Choice of 1mm or 2mm thick blades (generally 1mm used in summer, 2mm used in winter). Do not try to cut too deep - must be adjusted to suit conditions.

Keep engine revs reasonably high with a slow forward movement to remove as much material as possible. The machine may tend to walk along on its own in some conditions.

**RESULT** - Speed increase of playing surface. Maximizes fertilizer penetration & promotes strong healthy plant growth and strong roots.

## **BRUSH (SEE PAGE 34)**

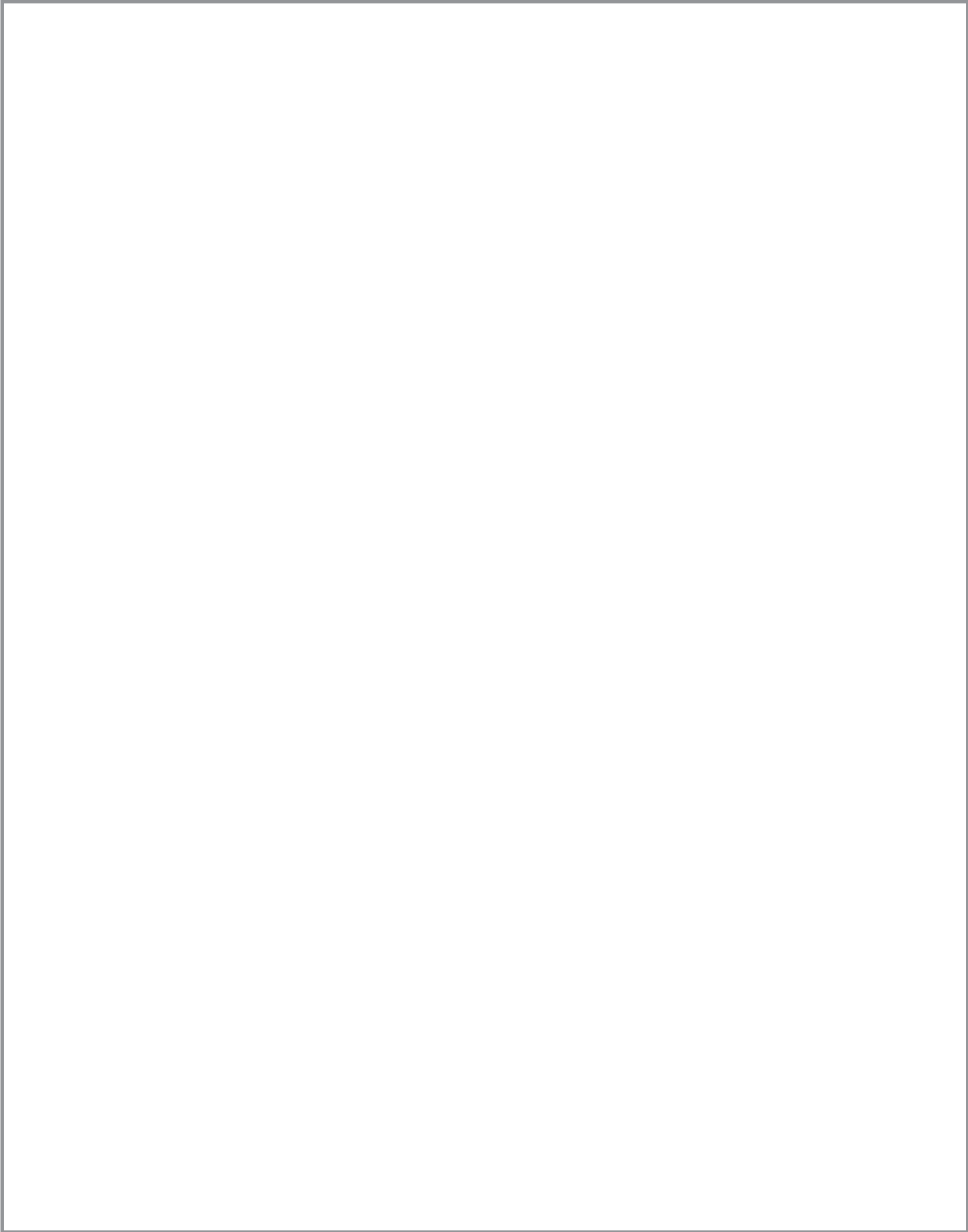
Used for light scarifying, brushing, removing debris, cigarette ends, pine needles moss, excess top dressing etc. Set at +3mm to +1mm for ground debris depending on conditions. Remove comb.

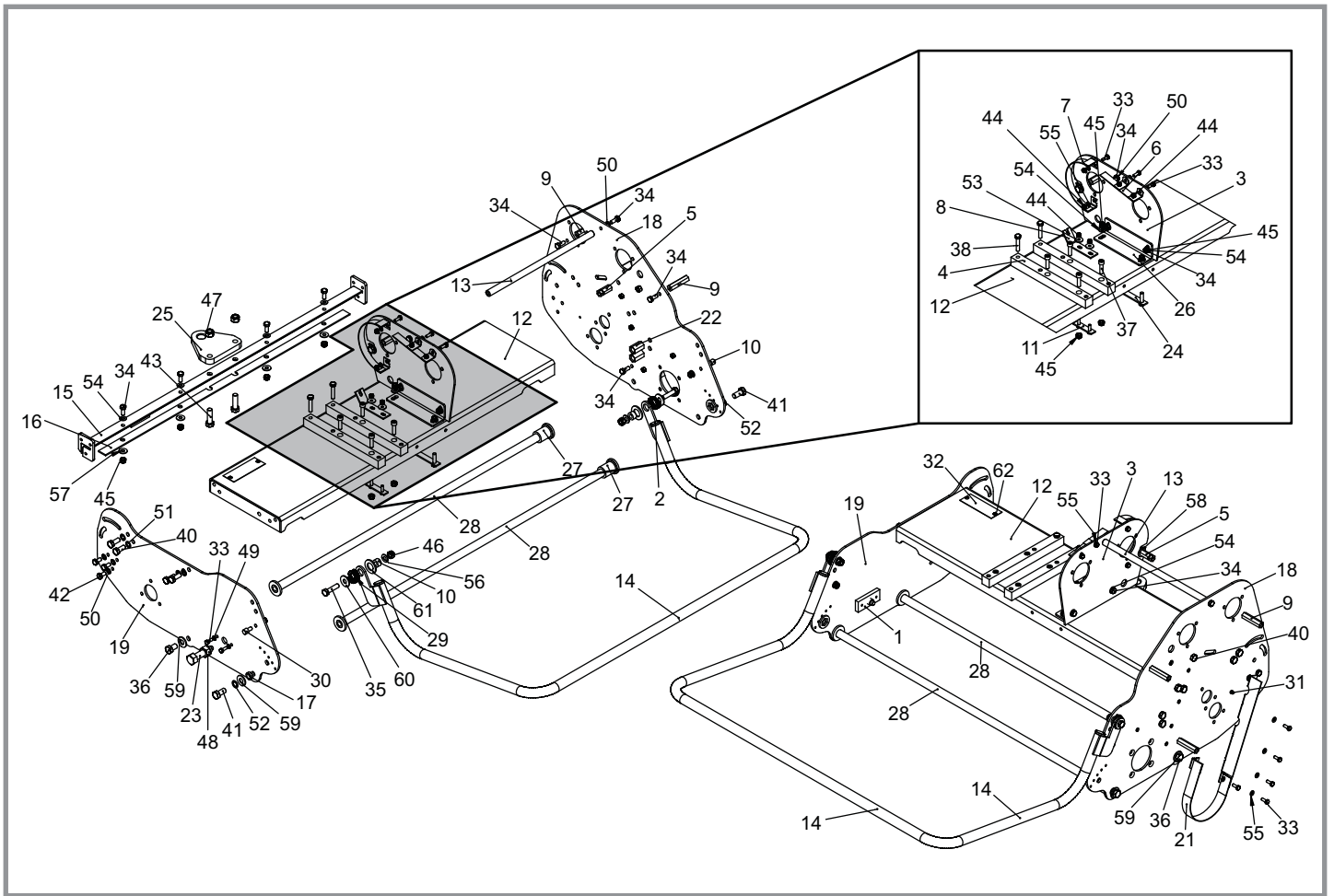
## **SORREL ROLLER NOT DRIVEN (SEE PAGE 37)**

Used for surface pricking. Lets air, water, fertilizer into the root zone. Good for over seeding and preparing damaged areas for repair. Reduces surface tension.

	Bowls	Cricket	Golf
Verticutter	Monthly	Fortnightly	Monthly
Scarifier	1 - 2 Months	1 - 2 Months	1 - 2 Months
Brush	As Required	As Required	As Required
Ironing roller	Match Days	Pre-Season	As Required
Sorrel Roller	1 - 2 Weeks	Monthly (As Required for Repair)	Monthly (As Required for Repair)



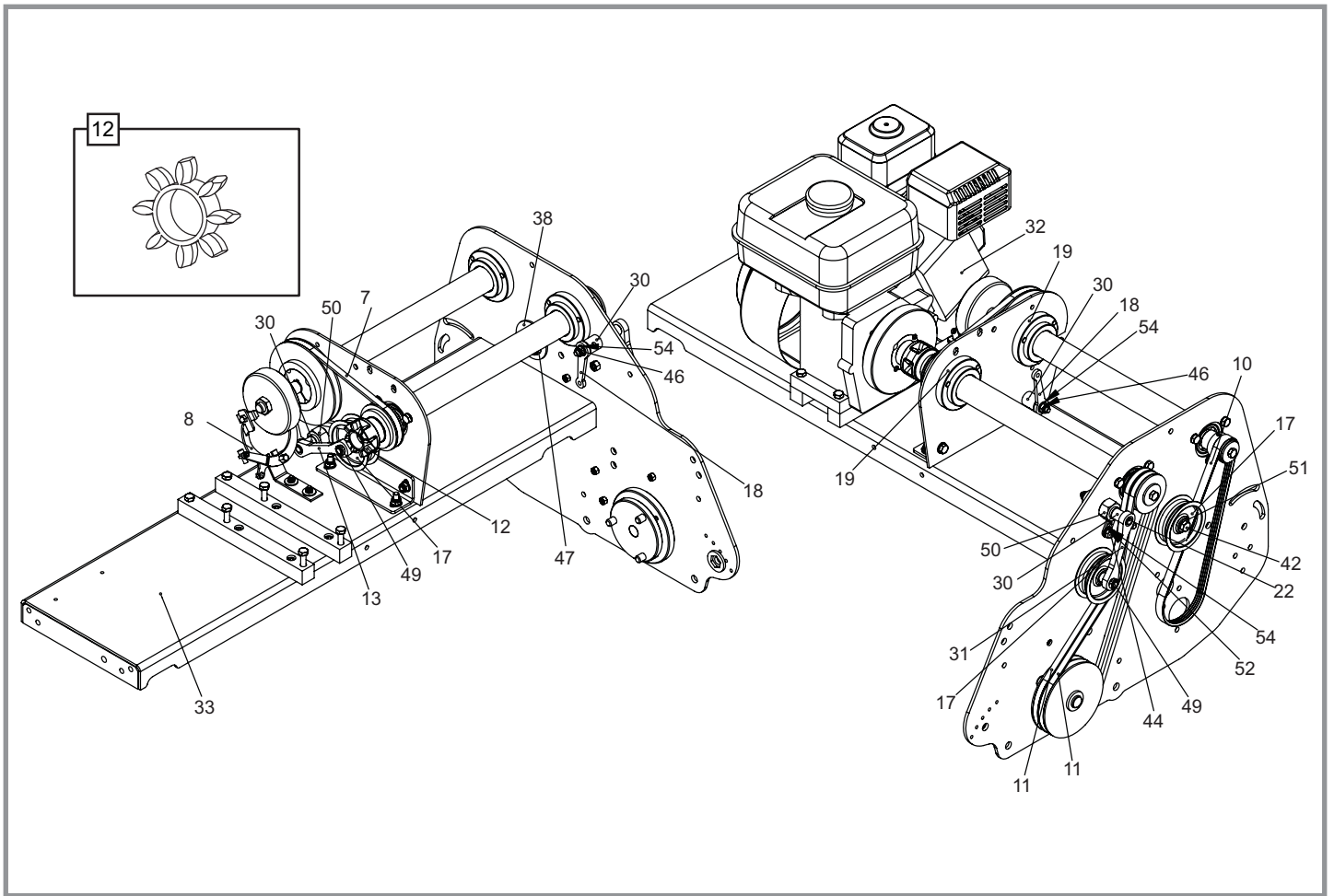




# 1.01

# Chassis - Main Assembly

Item No.	Part No.	Description	Quantity	Item No.	Part No.	Description	Quantity
1	171885	Cassette Thrust Plate	1	28	229666	Tie Bar Assy 26"	2
2	228024	1" Tube Bung	2	28	230157	Tie Bar Assy 30"	2
3	229000	Support Plate	1	28	230155	Tie Bar Assy 34"	2
4	229004	Engine Bearers	2	29	604761	Thackery Washer	2
5	229005	Cable Stop	2	30	J20023	Unit Limiting Stud	2
6	229006	Belt Guide Roller Clutch Top	1	31	J20064	Grease Nipple 1/4" UNF	1
7	229007	Belt Guide Roller Clutch Pulley	1	32	J20297	Serial Number Plate	1
8	229035	Brake Bracket	1	33	SP01008	Hex Set Screw M6 x 16	11
9	229115	Chain Case Stud	3	34	SP01009	Hex Set Screw M8 x 20	11
10	229152	Pivot Bush	2	35	SP01020	Hex Set Screw M10 x 40	2
11	229153	Clamp Plate Assy	1	36	SP01021	Hex Set Screw M12 x 20	2
12	229250	Engine Bed 26"	1	37	SP01025	Cap Head M8 x 30	4
12	229251	Engine Bed 30"	1	38	SP01027	Hex Set Screw M8 x 40	2
12	229252	Engine Bed 34"	1	39	SP01034	Hex Set Screw M10 x 20	2
13	229253	Tie Bar 26"	1	40	SP01035	Hex Set Screw M10 x 25	10
13	229254	Tie Bar 30"	1	41	SP01059	Hex Set Screw M12 x 25	2
13	229255	Tie Bar 34"	1	42	SP01076	Hex Set Screw M8 x 16	6
14	229265	Cradle W.A. 26"	1	43	SP01078	Hex Set Screw M12 x 40	2
14	229266	Cradle W.A. 30"	1	44	SP02004	Nut M6 Nyloc	6
14	229267	Cradle W.A. 34"	1	45	SP02006	Nut M8 Nyloc	16
15	229515	Tow Bar W.A. 26"	1	46	SP02008	Nut M10 Nyloc	2
15	229269	Tow Bar W.A. 30"	1	47	SP02010	Nut M12 Nyloc	2
15	229270	Tow Bar W.A. 34"	1	48	SP02037	Nut 5/8" UNF STD	1
16	229516	Rear Scraper 26"	1	49	SP03003	Washer M6 Toothed	2
16	229272	Rear Scraper 30"	1	50	SP03004	Washer M8 Toothed	8
16	229273	Rear Scraper 34"	1	51	SP03005	Washer M10 Toothed	10
17	229310	Quadrant Spacer	2	52	SP03006	Washer M12 Toothed	2
18	229327	Lh Side Plate W.A.	1	53	SP03007	Washer M6 x 18	2
19	229328	Rh Side Plate W.A.	1	54	SP03008	Washer M8 Form A	12
20	229347	Belt Guide	1	55	SP03010	Washer M6 Form A	11
21	229348	Belt Guide Assy	1	56	SP03011	Washer M10 Form A	2
22	229386	Stop Bush	2	57	SP03015	Washer M8 Form C	4
23	229394	Cassette Bolt	1	58	SP03016	Washer M10 Form C	2
24	229492	Retaining Plate Assy	1	59	SP03017	Washer M12 Form C	4
25	229759	Towbar Bracket W.A.	1	60	SP03018	Washer M10 Form G	2
26	230004	Support Bracket	1	61	SP03022	Washer M20 Form A	2
27	230153	Tie Bar Stop	2	62	SP05001	Rivet 4.8 x 10	2

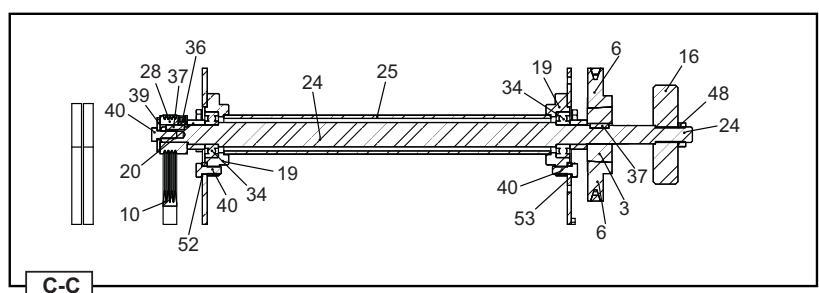
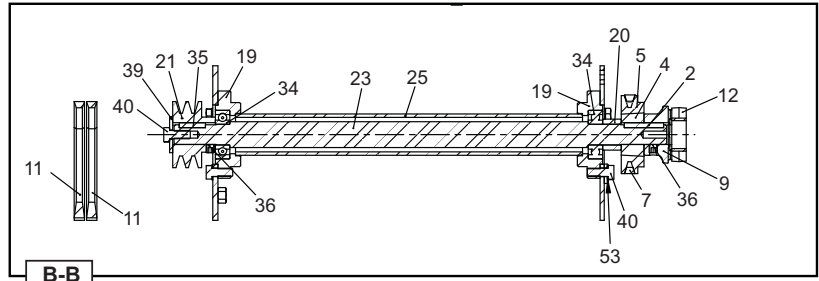
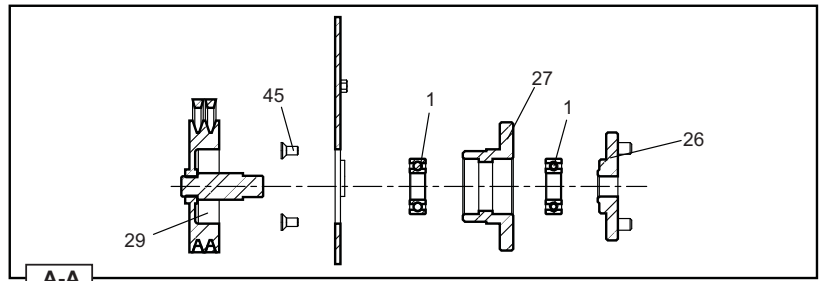
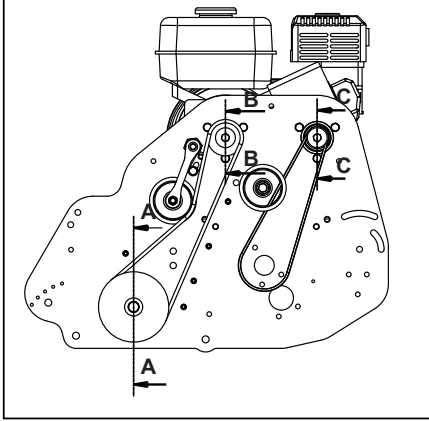


## 2.01

## Drive - Main Assembly 1

Item No.	Part No.	Description	Quantity
7	228007	Belt V X10-665 LP	1
8	228009	Brake Caliper	1
10	228012	Belt Ribbed 4PK 698	1
11	228030	Belt V Z-997	2
12	228103	Coupling Element	1
13	229009	Drive Idler Arm	1
17	229038	Tensioner Pulley	3
18	229044	Idler Lever	2
19	229091	Bearing Housing	4
22	229157	Belt Guide Peg	1
30	229382	Brg Housing	2
31	229383	Idler Arm W.A.	1
32	REF. 2.03	Engine Assy	1
33	REF. 1.01	Chassis	1
38	J209043	Tensioner Back Plate	1
39	J209249	Washer 9 x 35 x 3	2
42	SP01068	Hex Set Screw 3/8" UNF x 2 1/2"	1
44	SP01076	Hex Set Screw M8 x 16	1
46	SP02006	Nut M8 Nyloc	2
47	SP02018	Nut 3/8" UNF Nyloc	1
49	SP02033	Nut 3/8" Unf Lock (Thin)	2
50	SP02034	Nut 3/4" UNF Std	2
51	SP03002	Washer 3/8"	1
52	SP03004	Washer M8 Toothed	3
54	SP03008	Washer M8 Form A	3

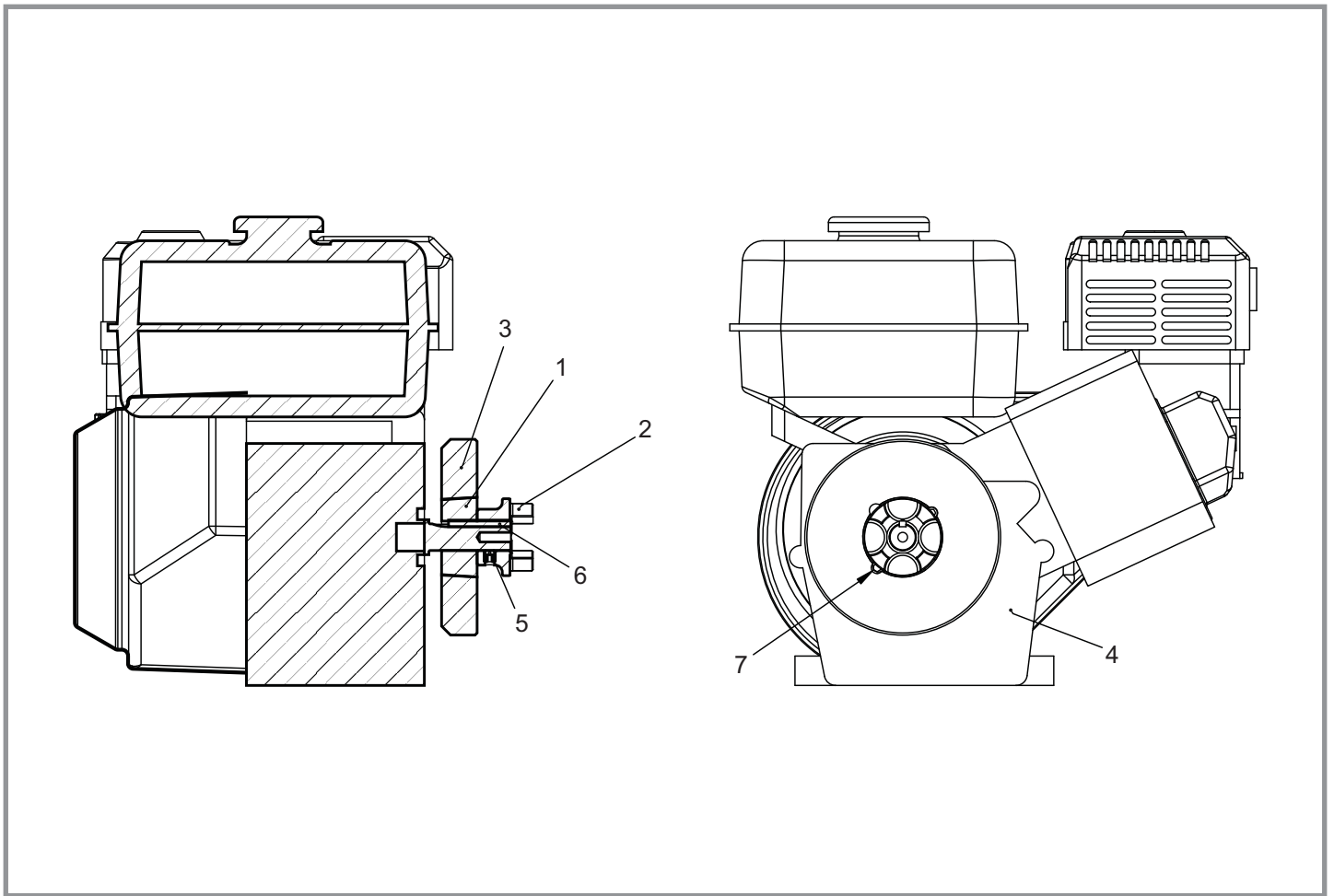
VIEWS



2.02

Drive - Main Assembly 2

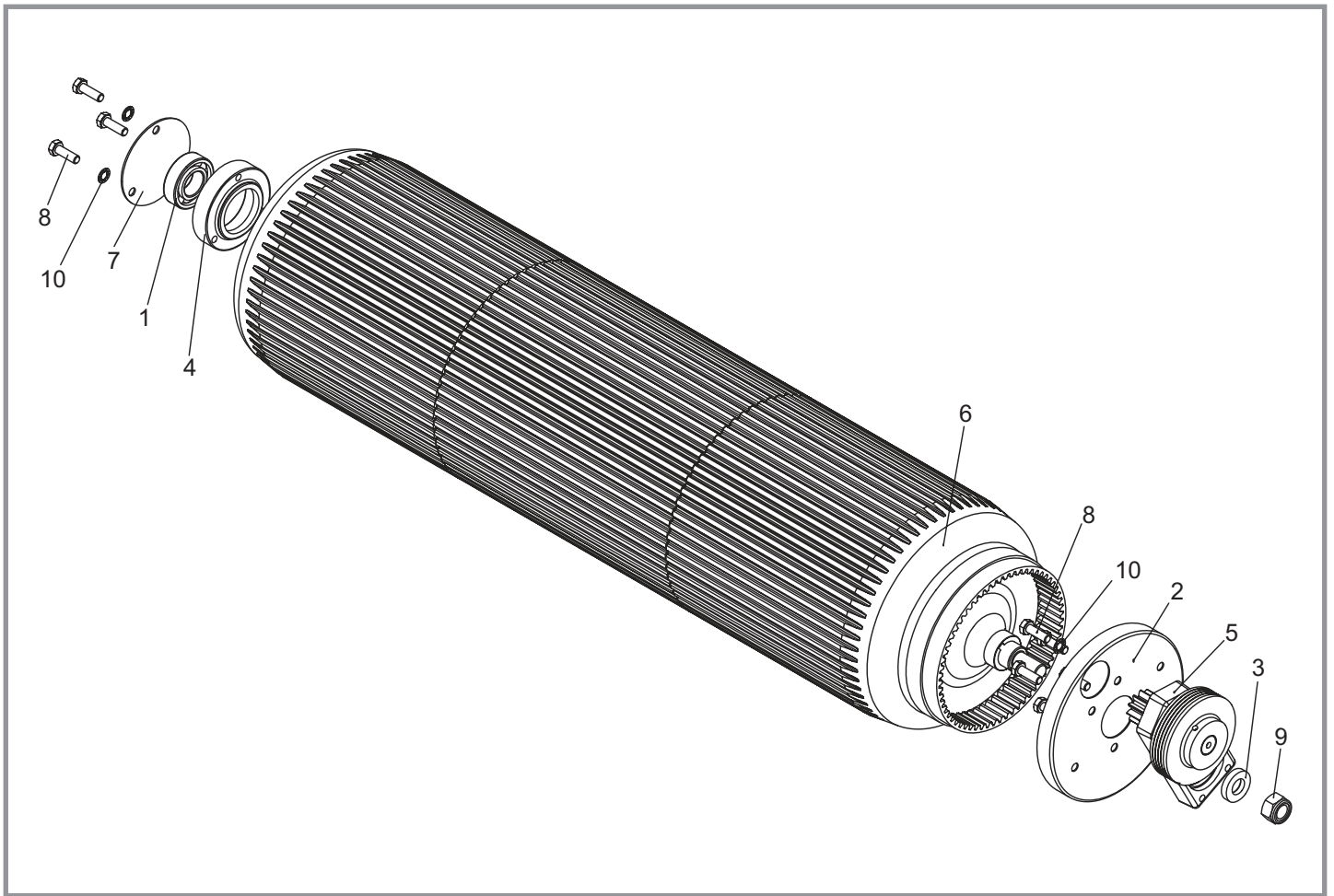
Item No.	Part No.	Description	Quantity	Item No.	Part No.	Description	Quantity
1	62662	Bearing 6205-2RS 3	2	52	SP03004	Washer M8 Toothed	3
2	73445	Key 3/16" x 3/16" x 2 1/4" Rd End	1	53	SP03004	Washer M8 Toothed	10
3	228001	Tapered Bush 1610 - 3/4"	1				
4	228002	Tapered Bush 1108 - 3/4"	1				
5	228004	Pulley SPZ-71	1				
6	228005	Pulley SPZ-132	1				
7	228007	Belt V X10-665 LP	1				
9	228011	Coupling Half (3/4")	1				
10	228012	Belt Ribbed 4PK 698	1				
11	228030	Belt V Z-997	2				
12	228103	Coupling Element	1				
16	229036	Brake Disc	1				
19	229091	Bearing Housing	4				
20	229092	Bearing Spacer	3				
21	229154	Pulley 2Z-60	1				
23	229244	Layshaft Cutter Drive 26"	1				
23	229246	Layshaft Cutter Drive 30"	1				
23	229248	Layshaft Cutter Drive 34"	1				
24	229245	Layshaft Roller Drive 26"	1				
24	229247	Layshaft Roller Drive 30"	1				
24	229249	Layshaft Roller Drive 34"	1				
25	229256	Layshaft Guard 26"	2				
25	229257	Layshaft Guard 30"	2				
25	229258	Layshaft Guard 34"	2				
26	229302	Drive Male Coupling	1				
27	229303	Bearing Housing	1				
28	229322	4 Groove Drive Pulley	1				
29	229358	Bottom Pulley	1				
34	J20052	Bearing 6204-2RS 3	4				
35	J20457	Key 3/16" x 3/16" x 1" Rd End	1				
36	J20467	Grub Screw M8 x 8	3				
37	J209030	Key 3/16" x 3/16" x 3/4" Rd End	2				
39	J209249	Washer 9 x 35 x 3	2				
40	SP01009	Hex Set Screw M8 x 20	14				
45	SP01077	Csk Cap Head M8 x 16	4				
48	SP02029	Nut M16 Lock (Thin)	1				



## 2.03

## Drive - Engine Assembly

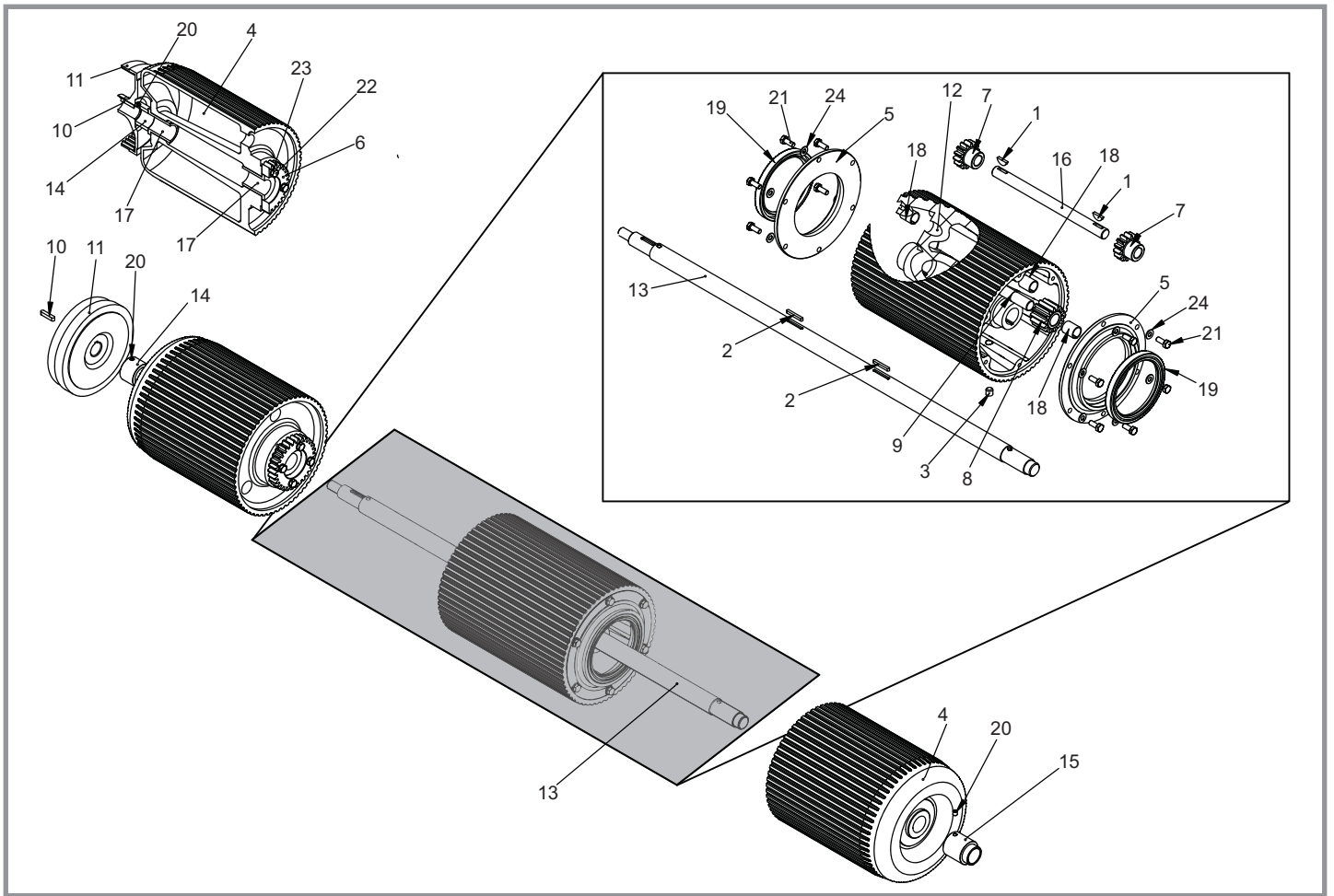
Item No.	Part Number	Description	Quantity
1	228001	Tapered Bush 1610 - 3/4"	1
2	228011	Coupling Half (3/4")	1
3	229015	Flywheel	1
4	229901	Engine 5.5 Hp Honda GX160 Q9 Type	1
4	229902	Engine 6.5 Hp Honda GX200 Q9 Type	1
5	J20467	Grub Screw M8 x 8	1
6	J209025	Key 3/16" x 3/16" x 1 3/4" Rd End	1
7	SP01079	Grub Screw 3/8" x 5/8"	2



### 3.01

### Rear Roller - Main Assembly

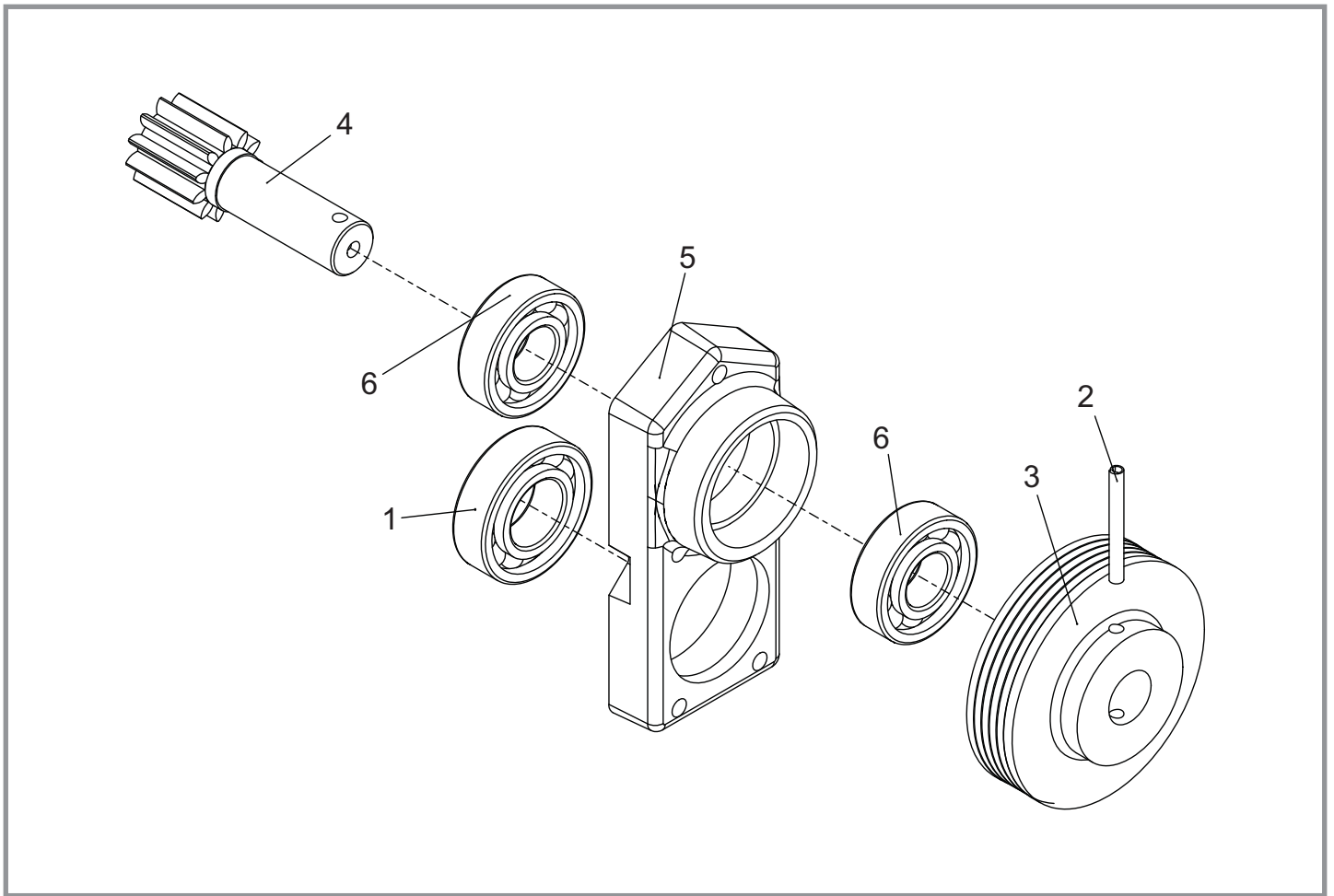
Item No.	Part No.	Description	Quantity
1	062662	Bearing 6205-2RS 3	1
2	229031	Dirt Excluder	1
3	229039	Landroll Collar	1
4	229104	Landroll Bearing Housing	1
5	REF. 3.03	Drive Bearing Housing Assy	1
6	REF. 3.02	Rear Roller Assembly	1
7	J20009	Blanking Plate	1
8	SP01045	Hex Set Screw M8 x 25	8
9	SP02028	Nut M16 Nyloc	1
10	SP03004	Washer M8 Toothed	8



## 3.02

## Rear Roller - Roller Assembly

Item No.	Part No.	Description	Quantity
1	16386	Key Woodruff 3/16" x 7/8"	2
2	73445	Key 3/16" x 3/16" x 1 1/2" Rd End	2
3	171702	Grub Screw 3/8" BSPT	1
4	195075	Outer Roller 26"	2
4	195076	Outer Roller 30" & 34"	2
5	195077	Oil Seal Housing	2
6	195078	Differential Wheel	2
7	195079	Differential Pinion	2
8	195080	Double Differential Pinion	1
9	195094	Pivot Pin	1
10	228049	Key 1/4" x 1/4" x 1 1/4" Rd End	1
11	229030	Internal Gear	1
12	229537	Centre Roller 26"	1
12	195074	Centre Roller 30"	1
12	229227	Centre Roller 34"	1
13	229500	Rear Roller Shaft 26"	1
13	229323	Rear Roller Shaft 30"	1
13	229324	Rear Roller Shaft 34"	1
14	229510	Shaft Collar 26"	1
14	229325	Shaft Collar 30" & 34"	1
15	229509	Shaft Spacer 26"	1
15	229326	Shaft Spacer 30" & 34"	1
16	229511	Diff Shaft 26"	1
16	195082	Diff Shaft 30"	1
16	229451	Diff Shaft 34"	1
17	229484	Bush For End Roller	4
18	601620	Bush 12DU 16	3
19	605857	Seal Rear Roller	2
20	J20467	Grub Screw M8 x 8	2
21	SP01009	Hex Set Screw M8 x 20	12
22	SP01036	Hex Set Screw M8 x 35	8
23	SP03004	Washer M8 Toothed	8
24	SP03008	Washer M8 Form A	12

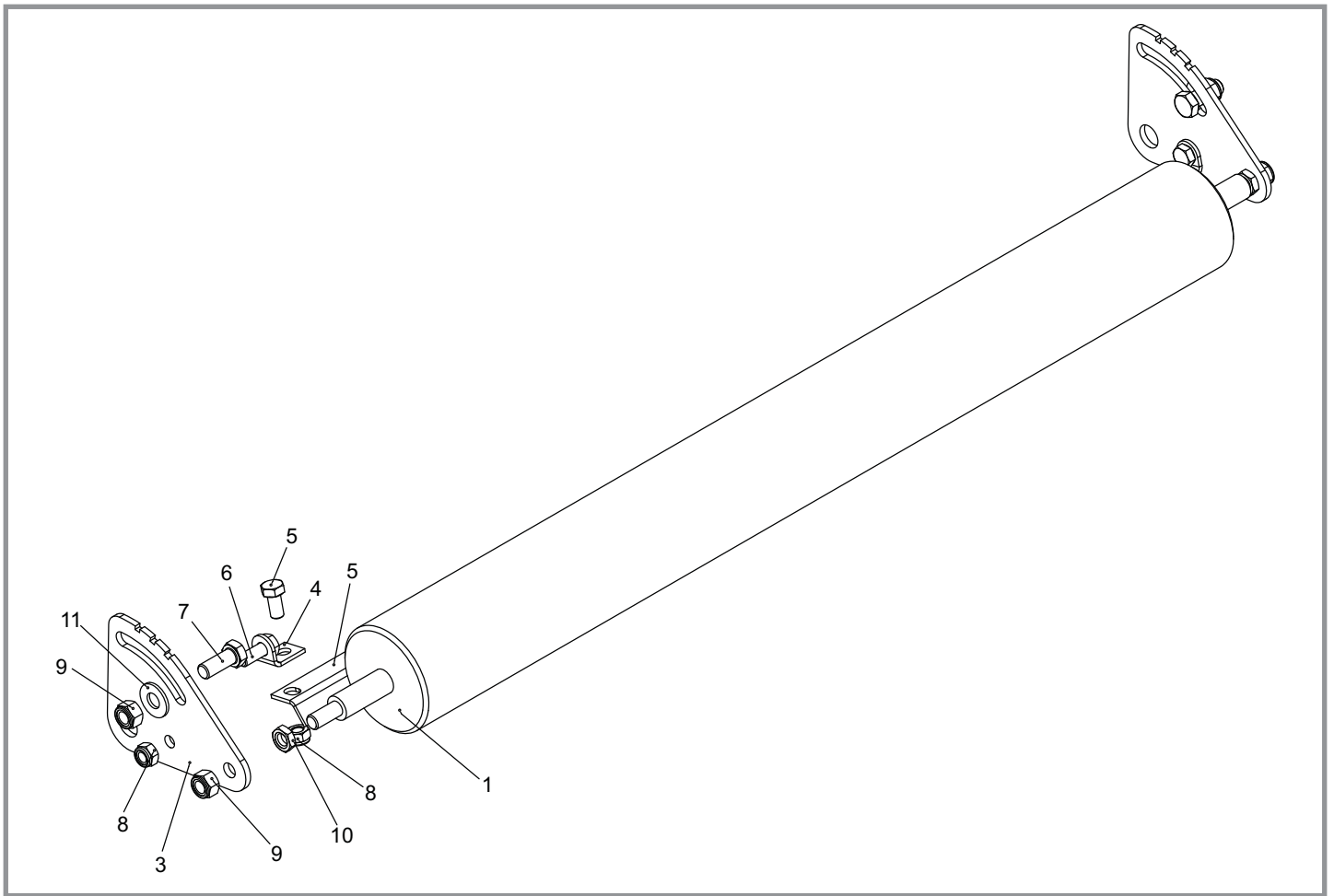


### 3.03

## Rear Roller - Drive Bearing Housing Assembly

Item No.	Part No.	Description	Quantity
1	062662	Bearing 6205-2RS 3	1
2	228053	Pin Spirol M5 x 45	1
3	229003	Drive Pulley Land Roll	1
4	229011	Pinion Shaft 11T	1
5	229033	Roller Bearing Housing Oblong	1
6	J20052	Bearing 6204-2RS 3	2

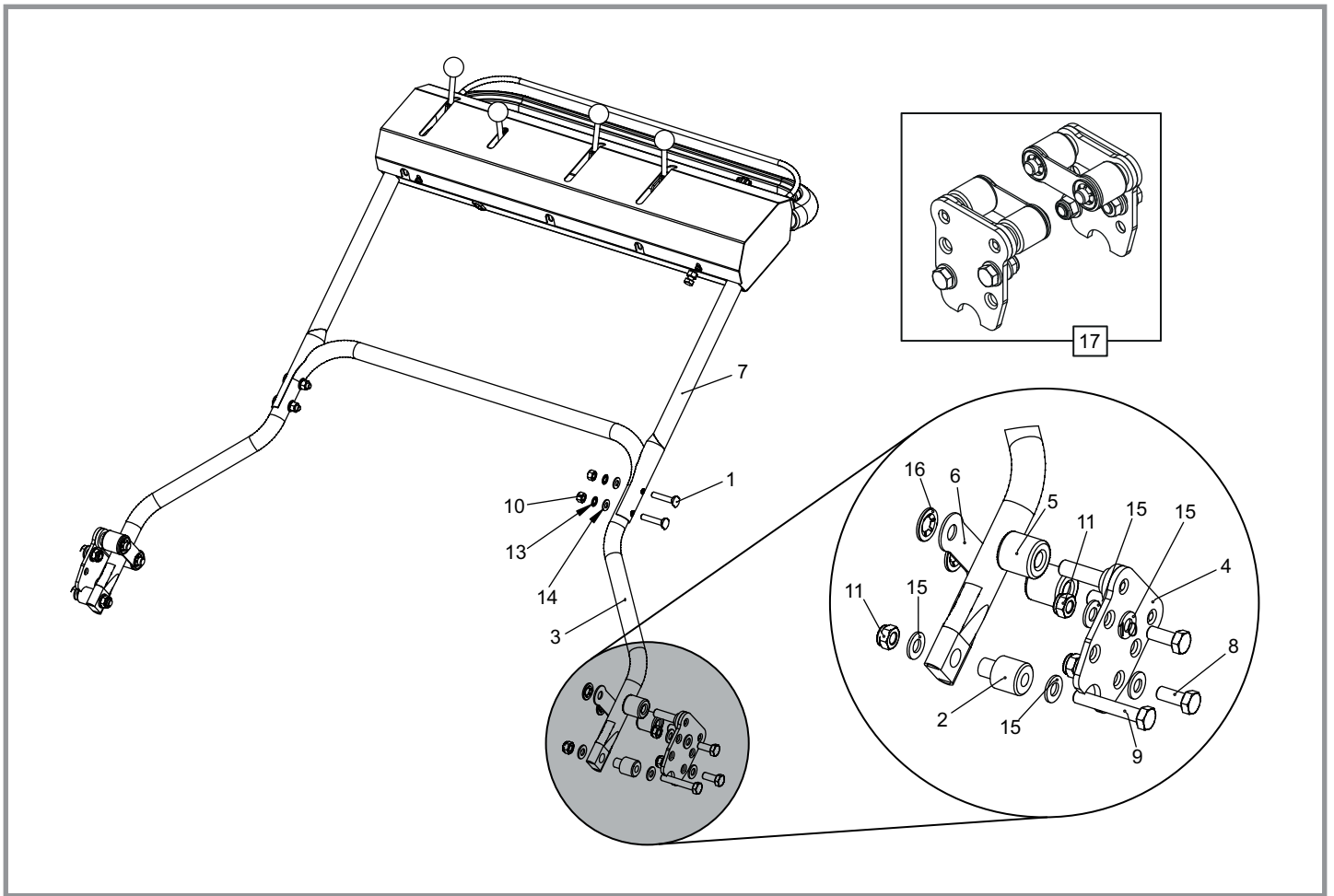




## 4.01

## Front Roller - Main Assembly

Item No.	Part No.	Description	Quantity
1	229231	Front Roller 26"	1
1	229232	Front Roller 30"	1
1	229233	Front Roller 34"	1
2	229262	Front Roller Scraper 26"	1
2	229263	Front Roller Scraper 30"	1
2	229264	Front Roller Scraper 34"	1
3	229329	Roller Quadrant	2
4	229491	Scraper Brk	2
5	SP01034	Hex Set Screw M10 X 20	2
6	SP01035	Hex Set Screw M10 X 25	2
7	SP01065	Hex Set Screw M12 X 30	2
8	SP02008	Nut M10 Nyloc	4
9	SP02010	Nut M12 Nyloc	4
10	SP02014	Nut M12 Lock (Thin)	2
11	SP03017	Washer M12 Form C	2



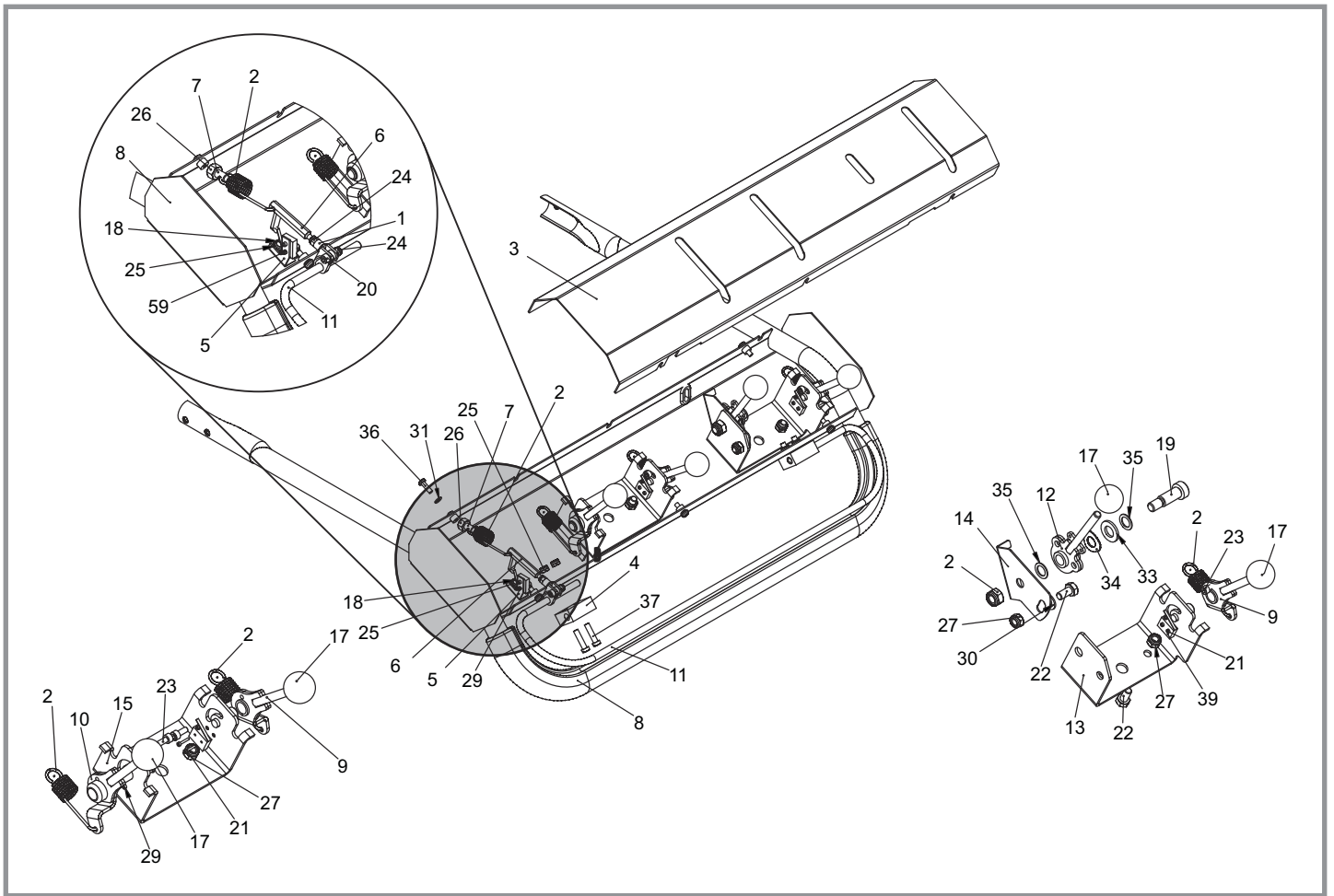
## 5.01

## Handle - Main Assembly

Item No.	Part No.	Description	Quantity
1	228093	Bolt Saddle M8 x 43	4
2	229166	Handle Pivot Bush	2
3	229587	Lower Handle Tube 26"	1
3	229576	Lower Handle Tube 30"	1
3	229577	Lower Handle Tube 34"	1
4	230200	Handle Bracket W.A.	2
5	230203	Handle Buffer	4
6	230205	Handle Bracket Support	2
7	See 5.02	G-Series Upper Handlebar Assy	1
8	SP01035	Hex Set Screw M10 x 25	4
9	SP01047	Hex Set Screw M10 x 60	2
10	SP02005	Nut M8 Std	4
11	SP02008	Nut M10 Nyloc	6
12	SP03004	Washer M8 Toothed	1
13	SP03004	Washer M8 Toothed	3
14	SP03008	Washer M8 Form A	4
15	SP03011	Washer M10 Form A	12
16	SP07001	Starlock 12mm	4
17	800505	Handle Mount Kit	1

### NOT SHOWN

-	229586	Wiring Harness	1
-	SP12002	Cable Throttle	1
-	229378	Cable Cylinder Clutch	1
-	229121	Cable Rear Roller Clutch	1
-	229122	Cable Brake	1

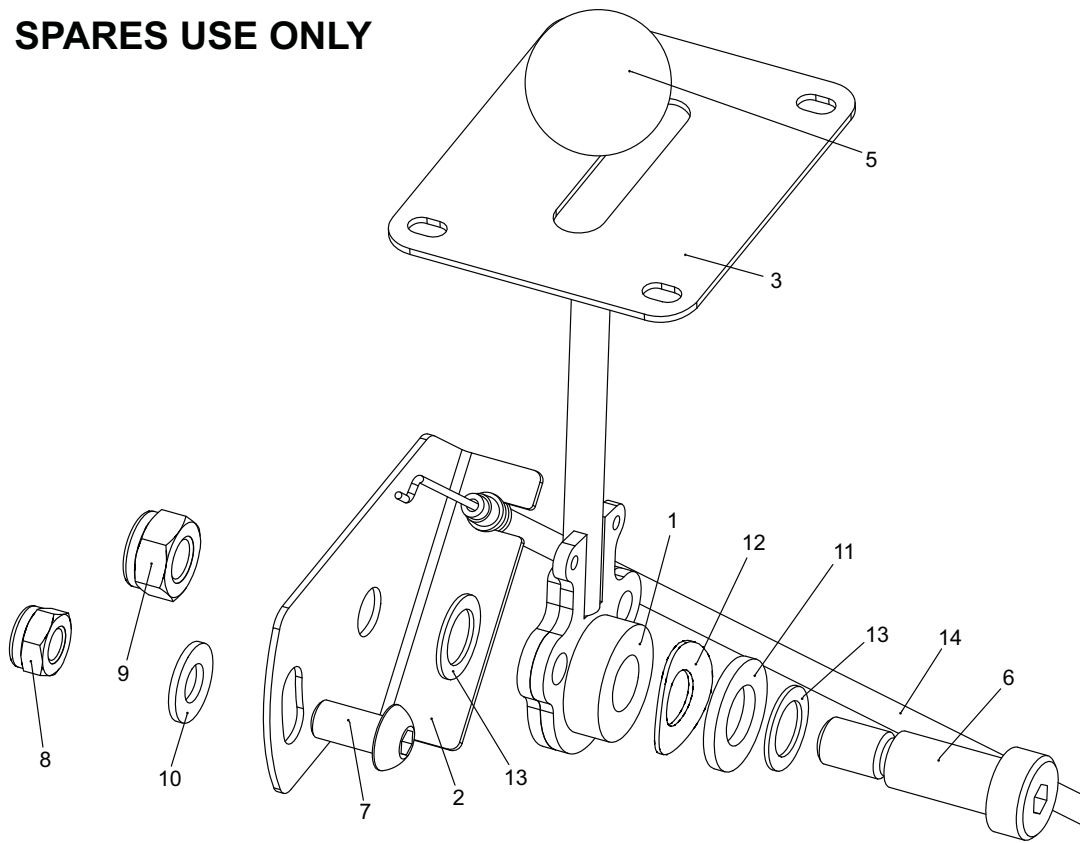


## 5.02

## Handle - Operating Console

Item No.	Part No.	Description	Quantity
1	228020	Clevis GM5 (5mm)	1
2	229167	Clutch Spring	4
3	229582	Console Cover	1
4	229585	Pivot Block	2
5	229590	Safety Switch Bracket	1
6	229595	Safety Lever Plunger W.A.	1
7	229620	Bolt For Spring	1
8	230160	G-Series Handle Moulding Assy	1
9	230170	Lever R.H. W.A.	2
10	230171	Lever L.H. W.A.	1
11	230180	Safety Bar W.A.	1
12	230190	Throttle Lever W.A.	1
13	230195	Throttle / Brake Bracket Assy	1
14	230196	Throttle Plate	1
15	230207	Lever Bracket Assy	1
16	260138	Grommet PV270A	1
17	J20017	Knob - Red	4
18	SP01019	Button Head M6 x 16	2
19	SP01029	Shoulder Bolt 12 x 25 M10	1
20	SP01043	Cap Head M5 x 16	1
21	SP01070	Cap Head M2 x 12	8
22	SP01076	Hex Set Screw M8 x 16	3
23	SP01081	Cap Head M5 x 12	3
24	SP02002	Nut M5 Nyloc	2
25	SP02004	Nut M6 Nyloc	6
26	SP02005	Nut M8 Std	2
27	SP02006	Nut M8 Nyloc	5
28	SP02008	Nut M10 Nyloc	1
29	SP02038	Nut M2 (Bush)	8
30	SP03008	Washer M8 Form A	1
31	SP03009	Washer M5 Form A	5
32	SP03010	Washer M6 Form A	6
33	SP03012	Washer M12 Form A	1
34	SP03019	Washer M12 Wave	1
35	SP03020	Shim 12 x 18 x 1	2
36	SP04001	Screw M5 x 16 Slotted	5
37	SP04003	Screw M5 x 25 Slotted	4

## SPARES USE ONLY



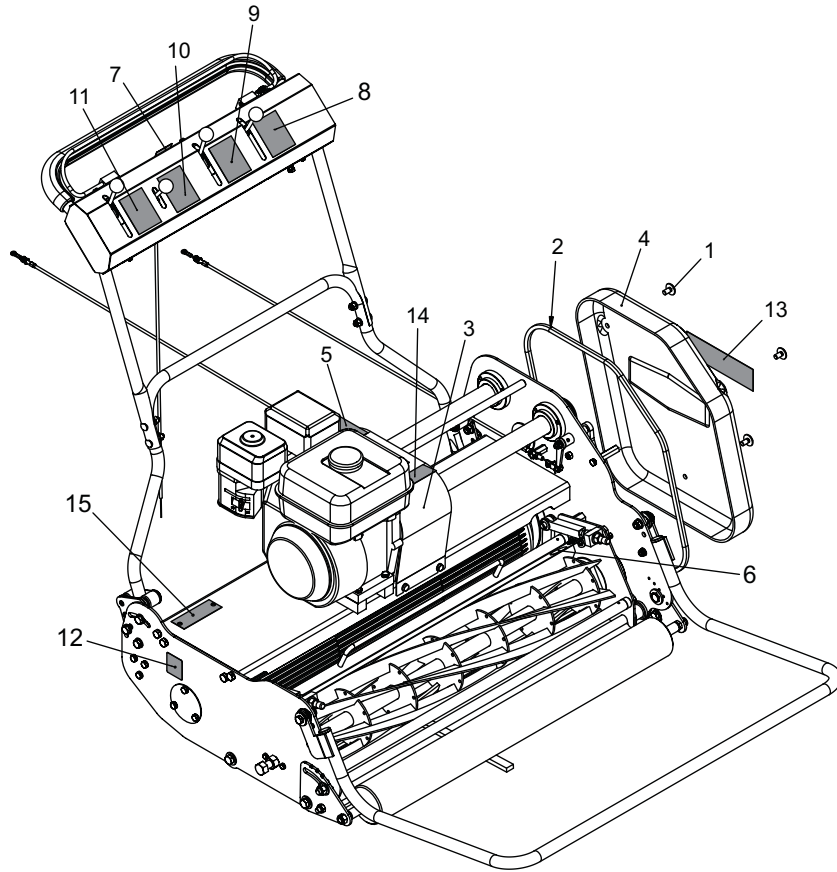
### 5.03

### Handle - Throttle Kit

Item No.	Description	Part Number	Quantity
1	230190	Throttle Lever W.A.	1
2	230196	Throttle Plate	1
3	230198	Cover Plate	1
5	J20017	Knob - Red	1
6	SP01029	Shoulder Bolt 12 x 25 M10	1
7	SP01048	Button Head M8 x 16	1
8	SP02006	Nut M8 Nyloc	1
9	SP02008	Nut M10 Nyloc	1
10	SP03008	Washer M8 Form A	1
11	SP03012	Washer M12 Form A	1
12	SP03019	Washer M12 Wave	1
13	SP03020	Shim 12 x 18 x 1	2
14	SP12002	Throttle Cable	1

#### NOTE

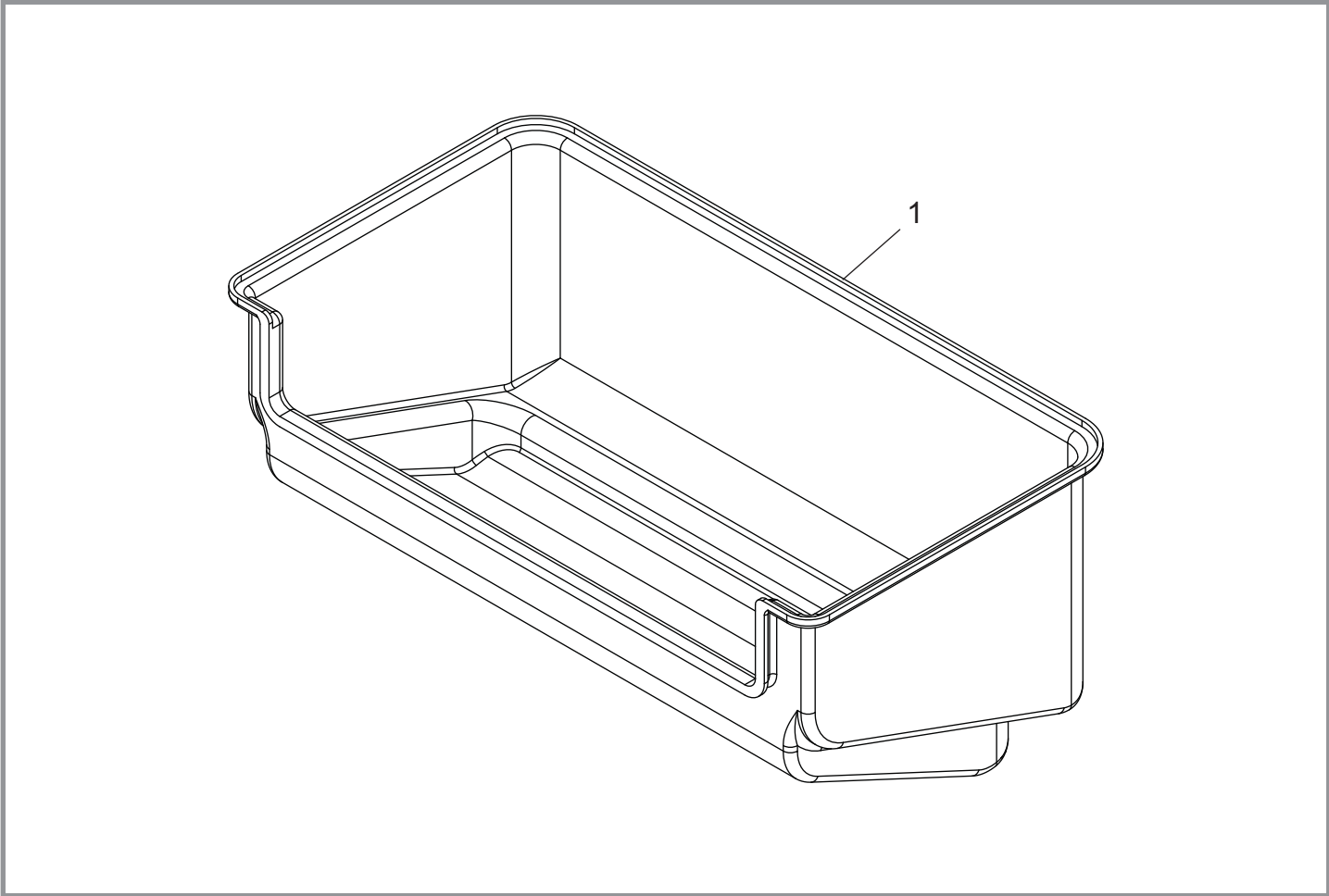
To retrofit this kit to machines built before April 2009 a 9mm hole is required to be drilled for Item 5.



## 6.01

## Guards & Decals

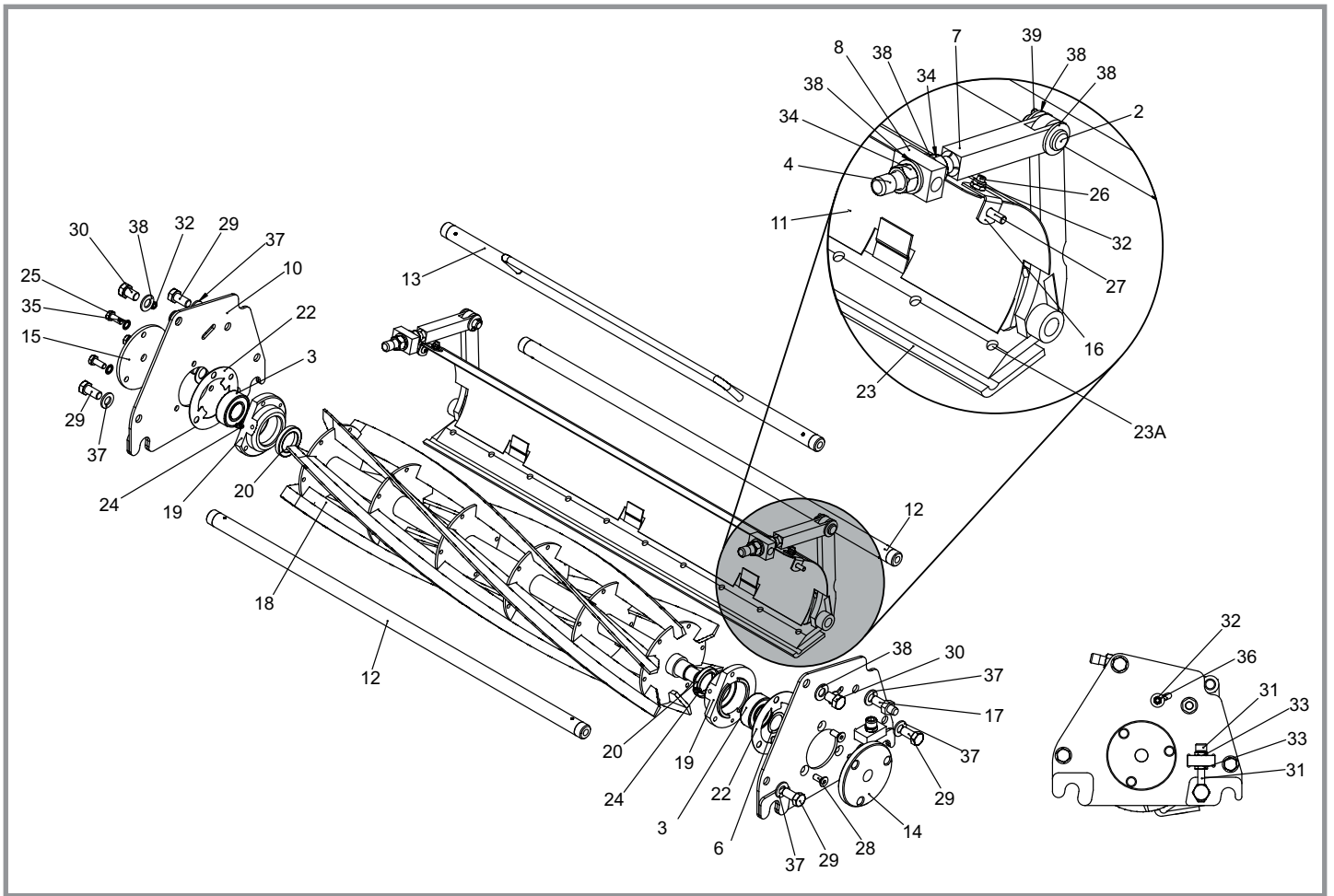
Item No.	Description	Part Number	Quantity
1	194946	Chain Case Screw	3
2	228031F	Chain Case Seal	1530mm
3	229093	Transmission Guard W.A.	1
4	229333	Chain Case	1
5	229375	Warning Decal	1
6	229376	Cut Decal	2
7	229599	Engine On / Off Decal	1
8	229600	Cutting Cylinder Decal	1
9	229601	Roller Drive Decal	1
10	229602	Throttle Control Decal	1
11	229603	Parking Brake Decal	1
12	229605	98 dB Decal	1
13	B32902	Decal Dennis	1
14	J20362	Dennis Decal Small	1
15	J20297	Serial Number Plate	1



**7.01**

**Grassbox**

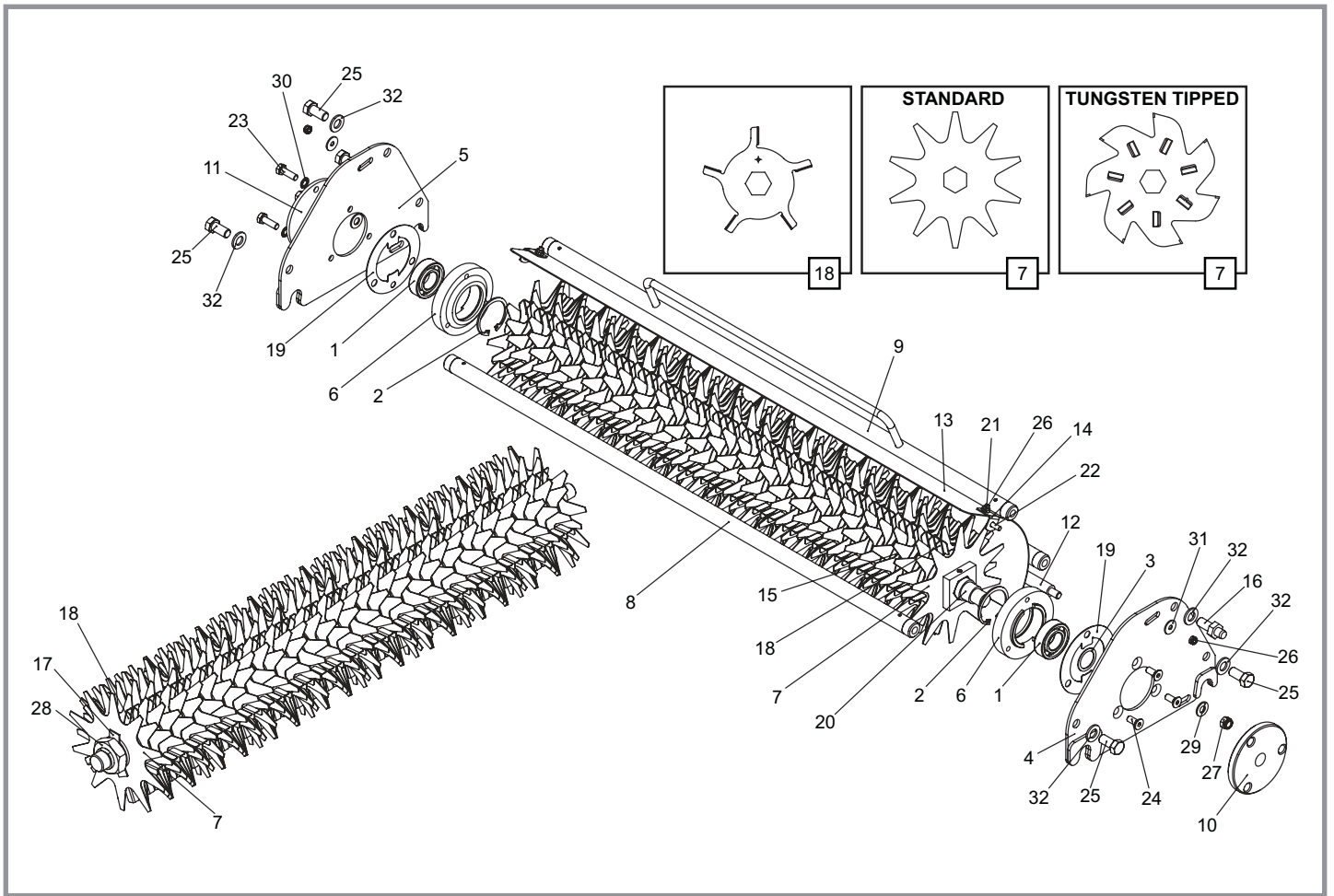
<b>Item No.</b>	<b>Part Number</b>	<b>Description</b>	<b>Quantity</b>
1	229241	Grassbox 26"	1
1	229242	Grassbox 30"	1
1	229243	Grassbox 34"	1



## 8.01

## Cassette - Cutter

Item No.	Part No.	Description	Quantity	Item No.	Part No.	Description	Quantity
1	185379	5/8" UNF Hex Screw	1	23	800125	Shear Blade & Carrier 30"	1
2	228022	Clevis Pin	2	23	229229	Shear Blade 34"	1
3	228029	Bearing 2205 2RS	2	23	800126	Shear Blade & Carrier 34"	1
4	228070	Black Cap	2	23A	185378	Screw	AR
5	228074	D315163175 Belleville Washer	1	24	J20064	Grease Nipple 1/4" UNF	2
6	228092	Shim ID 25.8 x 1 THK	1	25	SP01009	Hex Set Screw M8 x 20	3
7	229049	Adjuster Rod	2	26	SP01016	Button Head M6 x 12	2
8	229051	Adjuster Stop	2	27	SP01019	Button Head M6 x 16	2
9	229215	Cassette Side Plate W.A. L.H.	1	28	SP01058	Csk Cap Head M8 x 20	3
10	229216	Cassette Side Plate W.A. R.H.	1	29	SP01059	Hex Set Screw M12 x 25	5
11	229662	Deflector Plate 26"	1	30	SP01060	Hex Set Screw 1/2" UNF x 3/4"	2
11	229260	Deflector Plate 30"	1	31	SP01061	Cap Head M10 x 75	1
11	229261	Deflector Plate 34"	1	32	SP02004	Nut M6 Nyloc	4
12	229657	26" Tie Bar	2	33	SP02013	Nut M10 Lock (Thin)	2
12	229295	30" Tie Bar	2	34	SP02016	Nut 1/2" UNF	4
12	229296	34" Tie Bar	2	35	SP03004	Washer M8 Toothed	3
13	229658	26" Handle Tie Bar	1	36	SP03007	Washer M6 x 18	2
13	229297	30" Handle Tie Bar	1	37	SP03012	Washer M12 Form A	6
13	229298	34" Handle Tie Bar	1	38	SP03024	Washer 1/2"	10
14	229299	Driven / Female Coupling	1	39	SP05010	Split Pin 1/8" x 1"	2
15	229318	Bearing Cover	1				
16	229355	Deflector Plate Bracket	2				
17	229385	Stop Bolt	1				
18	229650	Cylinder 6 Blade 26"	1				
18	229619	Cylinder 8 Blade 26"	1				
18	229572	Cylinder 6 Blade 30"	1				
18	229615	Cylinder 8 Blade 30"	1				
18	229573	Cylinder 6 Blade 34"	1				
18	229568	Cylinder 8 Blade 34"	1				
19	229622	Cutter Bearing Housing	2				
20	229701	Oil Seal 32 x 47 x 7	2				
21	230002	Pivot Bolt - Cassette	1				
22	230326	Bearing Spacer Cassette Outer	2				
23	229652	Shear Blade 26"	1				
23	800123	Shear Blade & Carrier 26"	1				
23	067171	Shear Blade 30"	1				

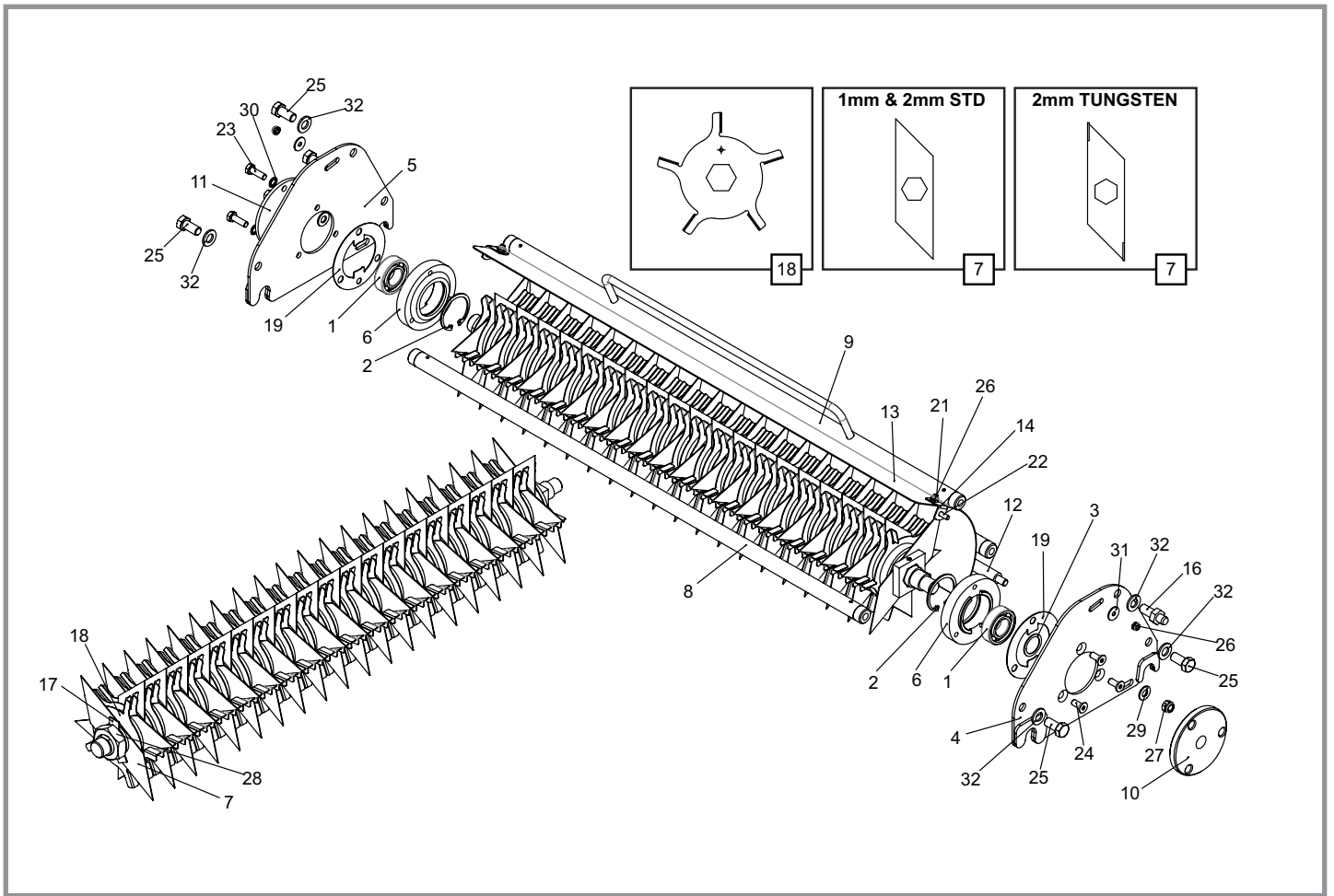


## 8.02

## Cassette - Verticutter

Item No.	Part No.	Description	Quantity	Item No.	Part No.	Description	Quantity
1	62662	Bearing 6205-2RS 3	2	26	SP02004	Nut M6 Nyloc	4
2	228042	Circlip D1300 0520	2	27	SP02018	Nut 3/8" UNF Nyloc	2
3	228092	Shim ID 25.8 X 1 Thk	1	28	SP02027	Nut M30 Lock (Thin)	1
4	229220	L.H. Non-Cut Cassette S'plate W.A.	1	29	SP03002	Washer 3/8"	2
5	229221	R.H. Non-Cut Cassette S'plate W.A.	1	30	SP03004	Washer M8 Toothed	3
6	229289	Bearing Housing Non-Cutter	2	31	SP03007	Washer M6 x 18	2
7	229290	Verticut Blade	AR	32	SP03012	Washer M12 Form A	6
7	229699	Tungsten Tipped Blade 7T	AR				
8	229657	26" Tie Bar	2				
8	229295	30" Tie Bar	2				
8	229296	34" Tie Bar	2				
9	229658	26" Handle Tie Bar	1				
9	229297	30" Handle Tie Bar	1				
9	229298	34" Handle Tie Bar	1				
10	229299	Driven / Female Coupling	1				
11	229318	Bearing Cover	1				
12	229660	26" Non Cutter Cassette Bar	1				
12	229349	30" Non Cutter Cassette Bar	1				
12	229350	34" Non Cutter Cassette Bar	1				
13	229663	26" Non Cutter Deflector W.A.	1				
13	229353	30" Non Cutter Deflector W.A.	1				
13	229354	34" Non Cutter Deflector W.A.	1				
14	229355	Deflector Plate Bracket	2				
15	229357	Blade Spacer	AR				
16	229385	Stop Bolt	1				
17	229483	Washer Tab 30mm	1				
18	229534	Fan Blade Large	AR				
19	230326	Bearing Spacer Cassette Outer	2				
20	800168	26" Hex Shaft Assy	1				
20	800164	30" Hex Shaft Assy	1				
20	800165	34" Hex Shaft Assy	1				
21	SP01016	Button Head M6 x 12	2				
22	SP01019	Button Head M6 x 16	2				
23	SP01045	Hex Set Screw M8 x 25	3				
24	SP01058	Csk Cap Head M8 x 20	3				
25	SP01059	Hex Set Screw M12 x 25	5				

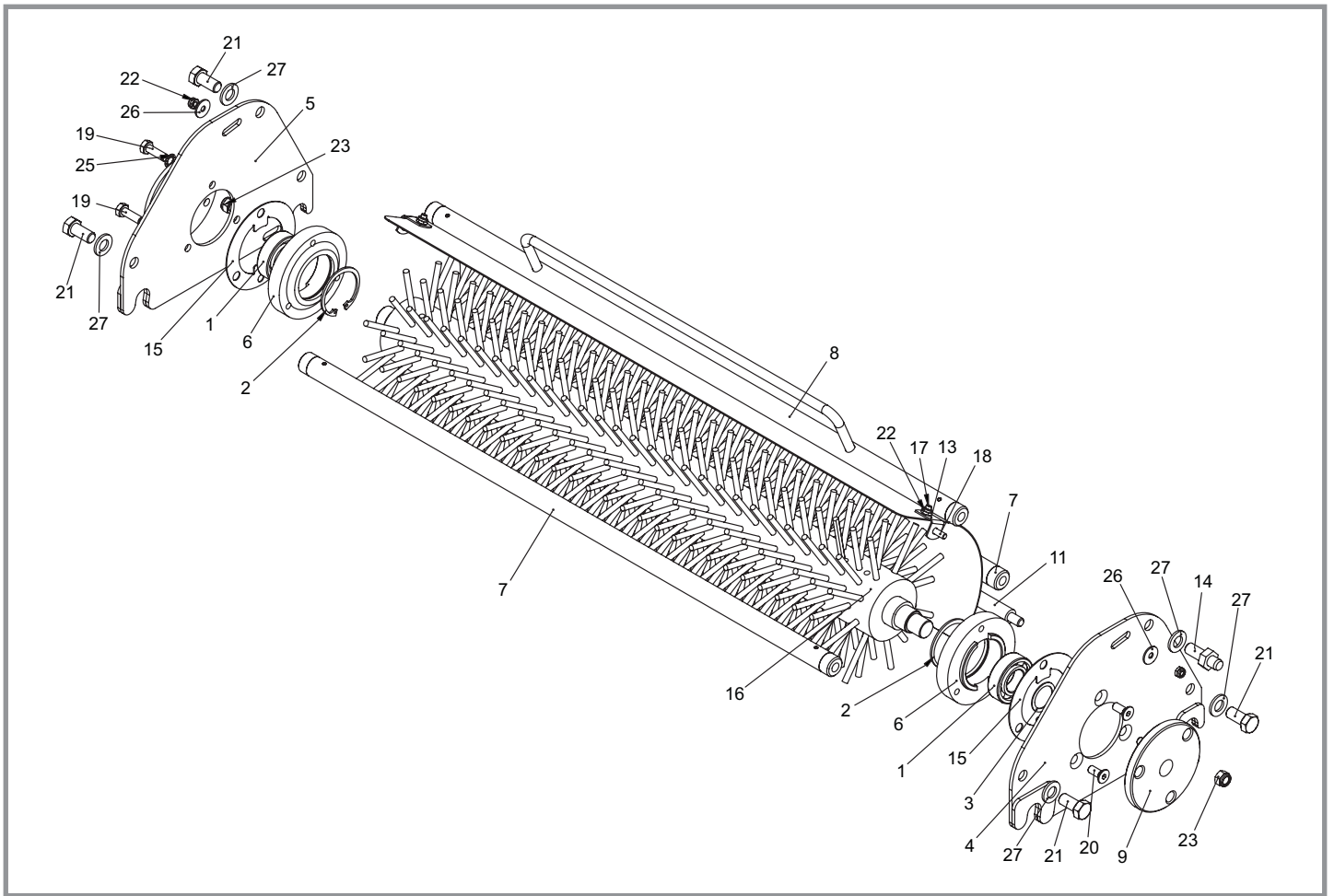




### 8.03

### Cassette - Scarifier

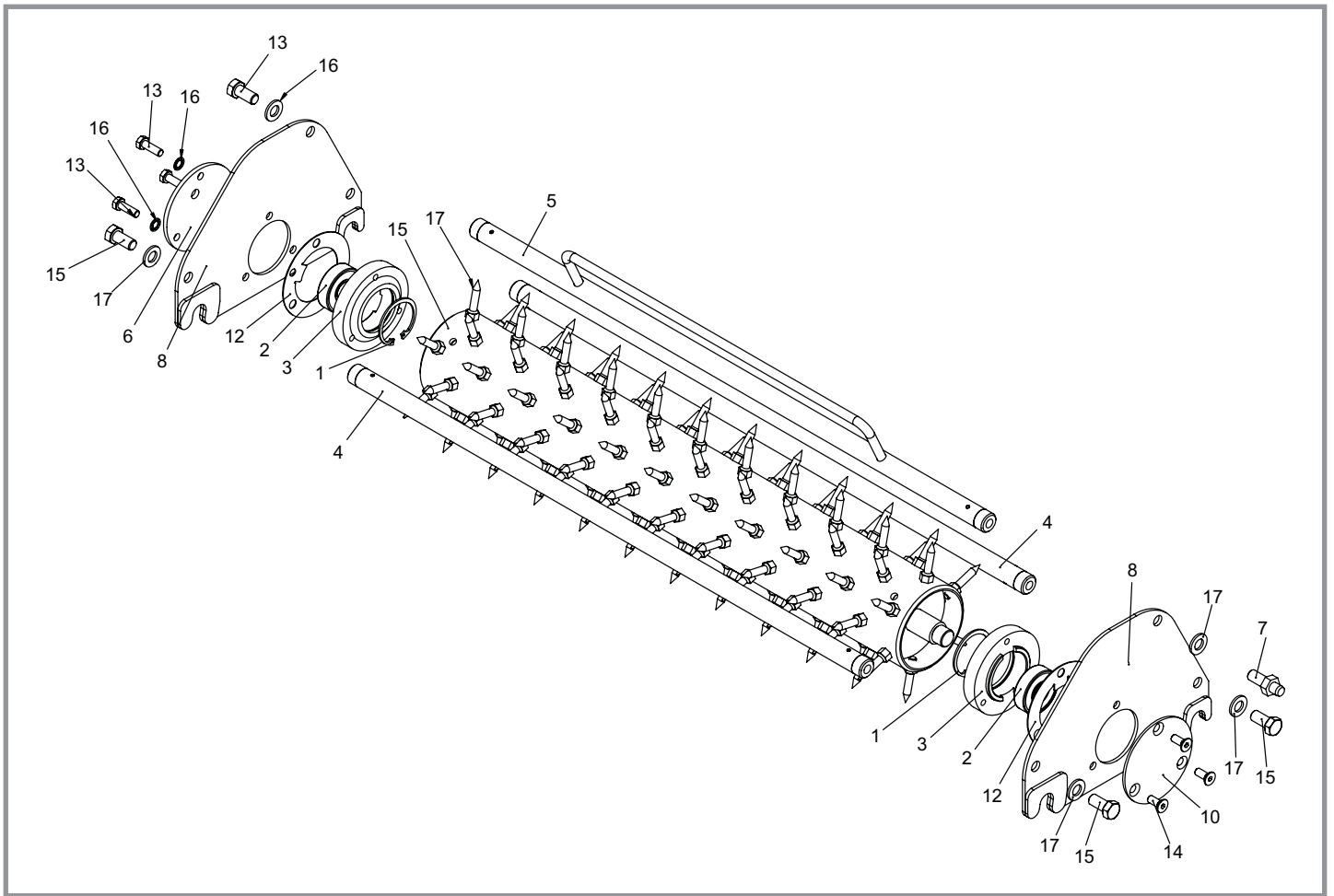
Item No.	Part No.	Description	Quantity	Item No.	Part No.	Description	Quantity
1	62662	Bearing 6205-2RS 3	2	25	SP01059	Hex Set Screw M12 x 25	5
2	228042	Circlip D1300 0520	2	26	SP02004	Nut M6 Nyloc	4
3	228092	Shim ID 25.8 x 1 Thk	1	27	SP02018	Nut 3/8" UNF Nyloc	2
4	229220	L.H. Non-Cut Cassette S'plate W.A.	1	28	SP02027	Nut M30 Lock (Thin)	1
5	229221	R.H. Non-Cut Cassette S'plate W.A.	1	29	SP03002	Washer 3/8"	2
6	229289	Bearing Housing Non-Cutter	2	30	SP03004	Washer M8 Toothed	3
7	229291	1mm Scarifier Blade	Ar	31	SP03007	Washer M6 x 18	2
7	229418	2mm Scarifier Blade	Ar	32	SP03012	Washer M12 Form A	6
7	230106	TT Scarifier Blade	Ar				
8	229657	26" Tie Bar	2				
8	229295	30" Tie Bar	2				
8	229296	34" Tie Bar	2				
9	229658	26" Handle Tie Bar	1				
9	229297	30" Handle Tie Bar	1				
9	229298	34" Handle Tie Bar	1				
10	229299	Driven / Female Coupling	1				
11	229318	Bearing Cover	1				
12	229660	26" Non Cutter Cassette Bar	1				
12	229349	30" Non Cutter Cassette Bar	1				
12	229350	34" Non Cutter Cassette Bar	1				
13	229663	26" Non Cutter Deflector W.A.	1				
13	229353	30" Non Cutter Deflector W.A.	1				
13	229354	34" Non Cutter Deflector W.A.	1				
14	229355	Deflector Plate Bracket	2				
15	229357	Blade Spacer	Ar				
16	229385	Stop Bolt	1				
17	229483	Washer Tab 30mm	1				
18	229534	Fan Blade Large	Ar				
19	230326	Bearing Spacer Cassette Outer	2				
20	800168	26" Hex Shaft Assy	1				
20	800164	30" Hex Shaft Assy	1				
20	800165	34" Hex Shaft Assy	1				
21	SP01016	Button Head M6 x 12	2				
22	SP01019	Button Head M6 x 16	2				
23	SP01045	Hex Set Screw M8 x 25	3				
24	SP01058	Csk Cap Head M8 x 20	3				



## 8.04

## Cassette - Brush

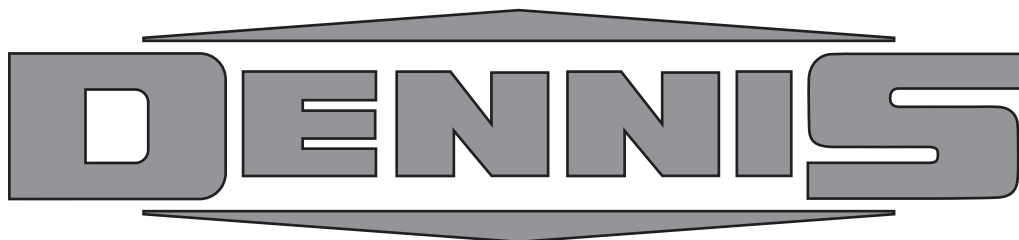
Item No.	Part No.	Description	Quantity	Item No.	Part No.	Description	Quantity
1	62662	Bearing 6205-2RS 3	2	20	SP01058	Csk Cap Head M8 x 20	3
2	228042	Circlip D1300 0520	2	21	SP01059	Hex Set Screw M12 x 25	5
3	228092	Shim ID 25.8 x 1 THK	1	22	SP02004	Nut M6 Nyloc	4
4	229220	L.H. Non-Cut Cassette S'plate W.A.	1	23	SP02018	Nut 3/8" UNF Nyloc	2
5	229221	R.H. Non-Cut Cassette S'plate W.A.	1	24	SP03002	Washer 3/8"	2
6	229289	Bearing Housing Non-Cutter	2	25	SP03004	Washer M8 Toothed	3
7	229657	26" Tie Bar	2	26	SP03007	Washer M6 x 18	2
7	229295	30" Tie Bar	2	27	SP03012	Washer M12 Form A	6
7	229296	34" Tie Bar	2				
8	229658	26" Handle Tie Bar	1				
8	229297	30" Handle Tie Bar	1				
8	229298	34" Handle Tie Bar	1				
9	229299	Driven / Female Coupling	1				
10	229318	Bearing Cover	1				
11	229660	26" Non Cutter Cassette Bar	1				
11	229349	30" Non Cutter Cassette Bar	1				
11	229350	34" Non Cutter Cassette Bar	1				
12	229663	26" Non Cutter Deflector W.A.	1				
12	229353	30" Non Cutter Deflector W.A.	1				
12	229354	34" Non Cutter Deflector W.A.	1				
13	229355	Deflector Plate Bracket	2				
14	229385	Stop Bolt	1				
15	230326	Bearing Spacer Cassette Outer	2				
16	800173	Brush Shaft Assembly 26" Soft	1				
16	800189	Brush Shaft Assembly 30" Soft	1				
16	800167	Brush Shaft Assembly 34" Soft	1				
16	800172	Brush Shaft Assembly 26" Hard	1				
16	800183	Brush Shaft Assembly 30" Hard	1				
16	800184	Brush Shaft Assembly 34" Hard	1				
16	800192	Brush Shaft Assembly 26" Multi	1				
16	800190	Brush Shaft Assembly 30" Multi	1				
16	800191	Brush Shaft Assembly 34" Multi	1				
17	SP01016	Button Head M6 x 12	2				
18	SP01019	Button Head M6 x 16	2				
19	SP01045	Hex Set Screw M8 x 25	3				



## 8.05

## Cassette - Sorrel Roller

Item No.	Part No.	Description	Quantity
1	228042	Circlip D1300 0520	2
2	228079	Bearing 6304 2RS	2
3	229289	Bearing Housing Non-Cutter	2
4	229657	26" Tie Bar	2
4	229295	30" Tie Bar	2
4	229296	34" Tie Bar	2
5	229658	26" Handle Tie Bar	1
5	229297	30" Handle Tie Bar	1
5	229298	34" Handle Tie Bar	1
6	229317	Bearing Cover Sorrel R.H.	1
7	229385	Stop Bolt	1
8	229502	Sorrel Side Plate W.A.	2
9	229669	Sorrel Roller 26"	1
9	229503	Sorrel Roller 30"	1
9	229504	Sorrel Roller 34"	1
10	229539	Bearing Cover Sorrel	1
11	229560	8mm Sorrel Spike	AR
12	230326	Bearing Spacer Cassette Outer	2
13	SP01045	Hex Set Screw M8 x 25	3
14	SP01058	Csk Cap Head M8 x 20	3
15	SP01059	Hex Set Screw M12 x 25	5
16	SP03004	Washer M8 Toothed	3
17	SP03012	Washer M12 Form A	6



**DENNIS**, Ashbourne Road, Kirk Langley, Derby, DE6 4NJ, United Kingdom

**Telephone:-** 01332 824777

**Fax:-** 01332 824 525

**E-mail:-** sales@dennisuk.com

**E-mail:-** spares@dennisuk.com

[www.dennisuk.com](http://www.dennisuk.com)